

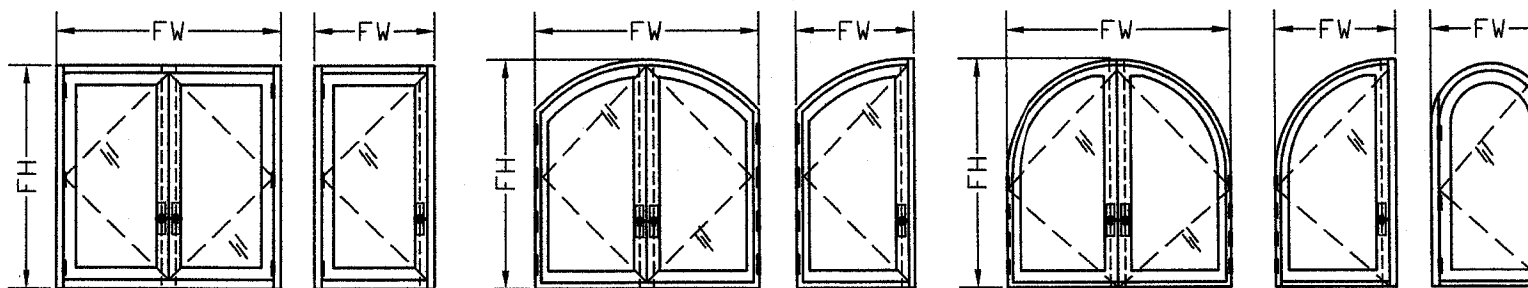
GENERAL NOTES: (FLORIDA BUILDING CODE 2017-6th edition)

- 1- CODE: THIS PRODUCT HAS BEEN TESTED AND DESIGNED IN ACCORDANCE WITH THE FLORIDA BUILDING CODE INCLUDING THE HIGH VELOCITY HURRICANE ZONE (HVHZ).
- 2- DEFINITION: THIS PRODUCT IS A SWING OUT CASEMENT WOOD TYPE WINDOW DESIGNED, CONSTRUCTED AND TESTED TO PROVIDE PROTECTION FROM HURRICANE FORCE WINDS AND WIND BORNE DEBRIS (LARGE & SMALL MISSILE) WITHIN THE ALLOWABLE DESIGNED PRESSURES AND LIMITATIONS STATED IN THIS APPROVAL.
- 3- LABELING: PRODUCT MUST BE LABEL IN ACCORDANCE WITH FBC. THE PERMANENT LABEL, MARKING OR ETCHING SHALL PROVIDE TRACEABILITY TO THE MANUFACTURER AND PRODUCT.
- 4- PROJECT DESIGN PRESSURES: THE PROJECT DESIGNED PRESSURES MUST BE CALCULATED BASED ON ASCE 7-10, BY A PROFESSIONAL ARCHITECT OR ENGINEER. THE PROJECT DESIGNED PRESSURE, AS DETERMINED BY ASCE-10, ARE PERMITTED TO BE MULTIPLIED BY 0.6 AND THEY MUST NOT EXCEED THE ALLOWABLE PRODUCT PRESSURE SPECIFIED HERE-IN.
- 5- MATERIAL: ALL WOOD PARTS TO BE SOLID OR LAMINATED MAHOGANY OR ANY OTHER SPECIES WITH SPECIFIC GRAVITY GREATER OR EQUAL TO 0.45.
- 6- FASTENERS: ASSEMBLY SCREWS AND ANCHORS SHALL BE AS SPECIFIED IN THE CURRENT SET OF DRAWINGS. INSTALLATION AND LOADS AS PER THIS APPROVAL. ANCHOR QUANTITY & SPACING MUST NOT EXCEED THE MAXIMUM LIMITS SPECIFIED BY THIS APPROVAL.
- 7- USE: IT SHALL BE THE RESPONSIBILITY OF THE CONTRACTOR, ARCHITECT OR ENGINEER OF RECORD TO VERIFY THE FOLLOWING:
 - 7.1- THE STABILITY OF THE STRUCTURE WHERE THE PRODUCT IS TO BE ATTACHED INSURING PROPER ANCHORAGE.
 - 7.2- THE SITE SPECIFIC PROJECT CRITERIA, SUCH AS BUT NOT LIMITED TO, LOCAL CODE REQUIREMENTS, DESIGNED PRESSURES ETC.
 - 7.3- THAT THIS APPROVAL IS ADEQUATE TO THE SPECIFIC PROJECT.
- 8- WOOD BUCKS (1x or 2x) BY OTHERS, MUST BE ANCHORED PROPERLY TO TRANSFER LOADS TO THE STRUCTURE.

TABLE OF CONTENTS:

SHEET	DESCRIPTION
1 of 11	GENERAL NOTES & MODEL TYPES
2 of 11	MODELS C4001, C4002, C4003 ELEVATIONS
3 of 11	MODELS C4004, C4005 ELEVATIONS
4 of 11	MODELS C4004A, C4005A ELEVATIONS
5 of 11	MODELS C4001, C4002, C4003, C4004 & C4005 SECTION DETAILS
6 of 11	MODELS C4004A & C4005A SECTION DETAILS
7 of 11	MODEL C4001, C4004 & C4005 COMPONENTS
8 of 11	MODEL C4004A & C4005A COMPONENTS
9 of 11	MODEL C4002 & C4003 COMPONENTS
10 of 11	GLAZING DETAILS & CORNER ASSEMBLY
11 of 11	ANCHORAGE DETAILS & ELEVATIONS LAY-OUT

MODELS C4001, C4002, C4003

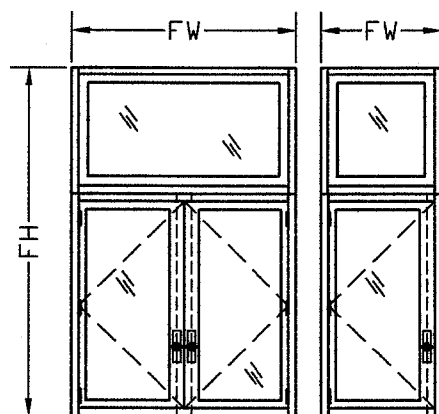


MODEL C4001
RETANGULAR WINDOW
Pd= +75, -90 PSF

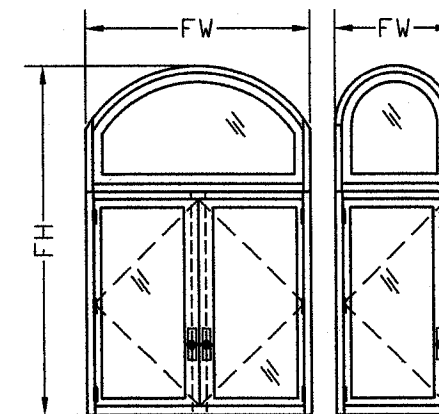
MODEL C4002
ELLIPTICAL WINDOW
Pd= +75, -90 PSF

MODEL C4003
ARCHED WINDOW
Pd= +75, -90 PSF

MODELS C4004, C4004A, C4005 & C4005A

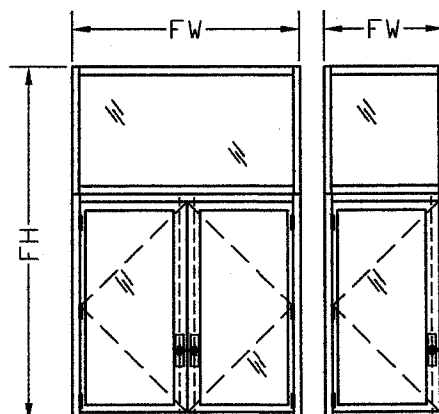


MODEL C4004
RETANGULAR WINDOW
W/ SQUARE TRANSOM
Pd= +75, -90 PSF

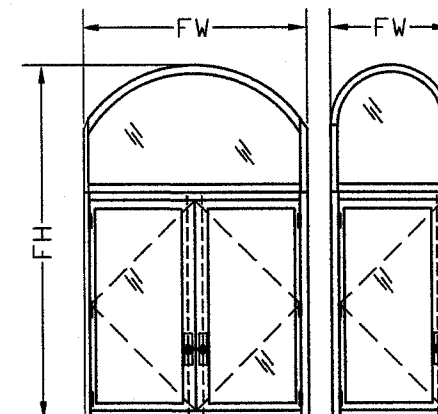


MODEL C4005
RETANGULAR WINDOW
W/ ARCHED/ ELLIPTICAL TRANSOM
Pd= +75, -90 PSF

FBC SECTION 2411.3.3.1 FOR EACH FIXED GLASS SILL WITH WIDTH MORE THAN 3 FEET TO HAVE TWO APPROVED NEOPRENE SETTING BLOCKS 70-90 SHORE A DUROMETER HARDNESS



MODEL C4004A
RETANGULAR WINDOW
W/ SQUARE TRANSOM
Pd= +75, -90 PSF



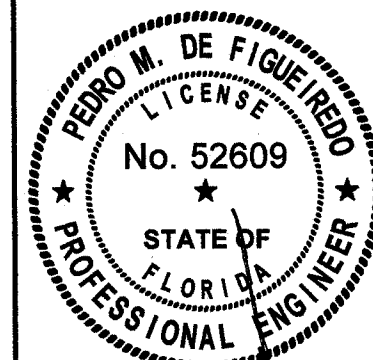
MODEL C4005A
RETANGULAR WINDOW
W/ ARCHED/ ELLIPTICAL TRANSOM
Pd= +75, -90 PSF

PREMIUM
ESTATES
S.A.C.

AV. RICARDO PALMA #843
LIMA, PERU
TEL: (511) 610-9110

PRODUCT:
SERIES C4000
MAHOGANY CASEMENT
IMPACT WINDOWS
LARGE & SMALL MISSILE

ENGINEERING:
EngCo Inc.
CA 8116
1791 BLOUNT ROAD 907
POMPANO BEACH - FL. 33069
ENGCO@AOL.COM



DEC 22 2017

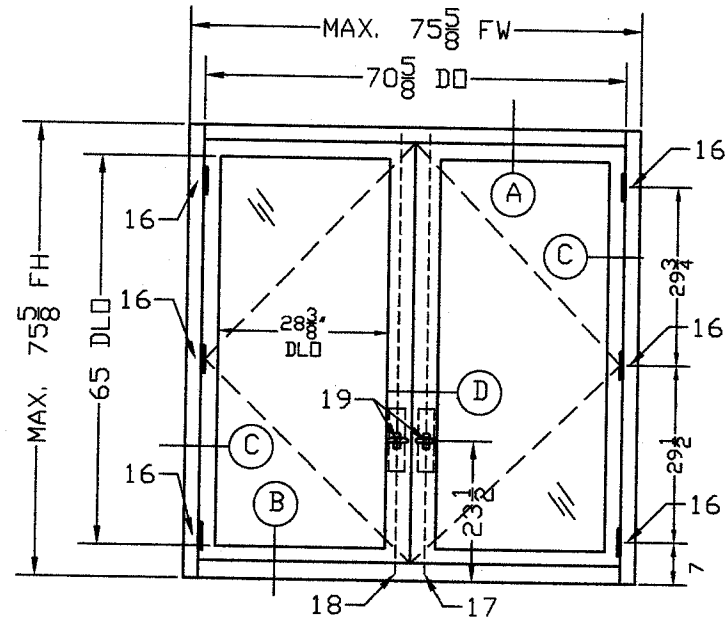
Engineer Seal
Pedro De Figueiredo
PE 52609

Date: 12/16/17
Scale: NA
Design by: PPMF

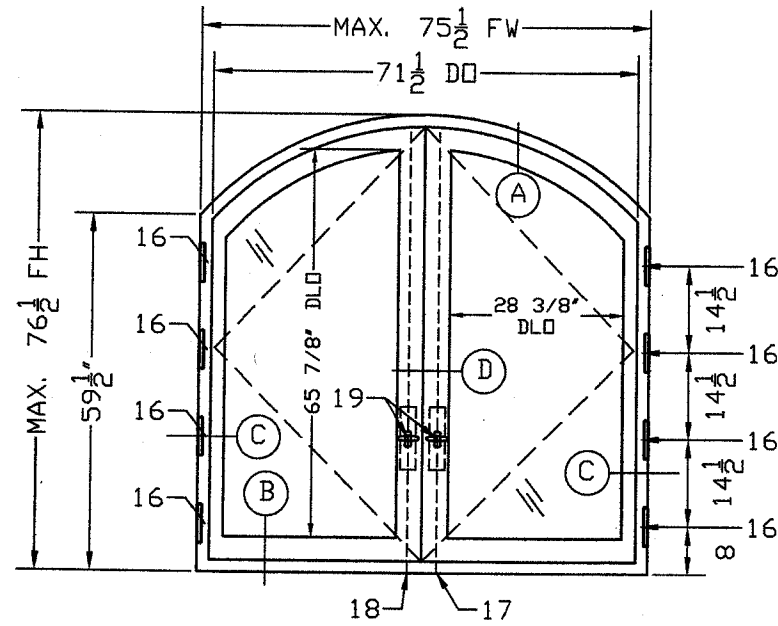
Drawing Number
17-884

SHEET
1 of 11

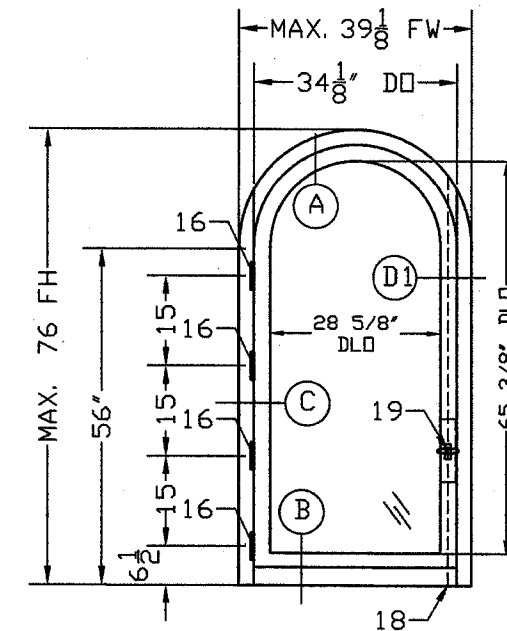
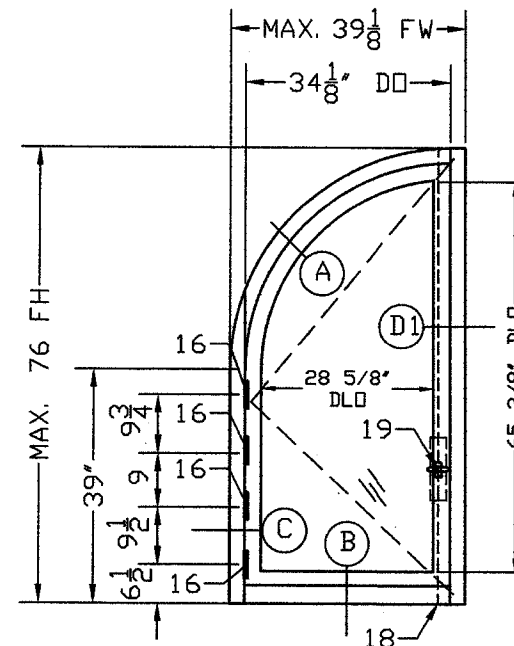
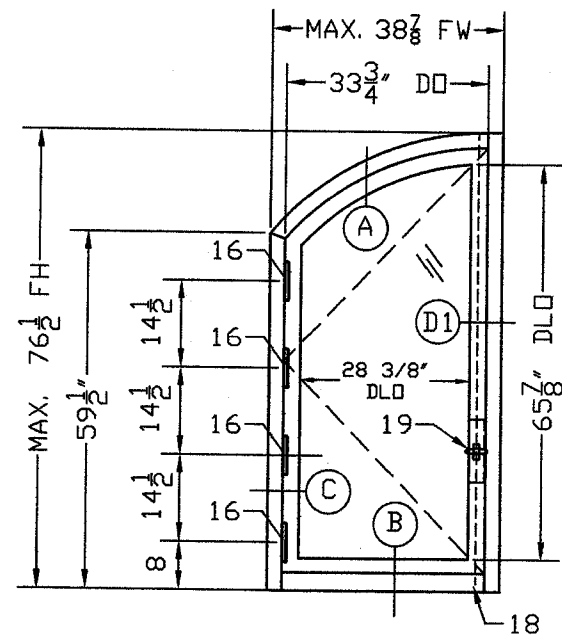
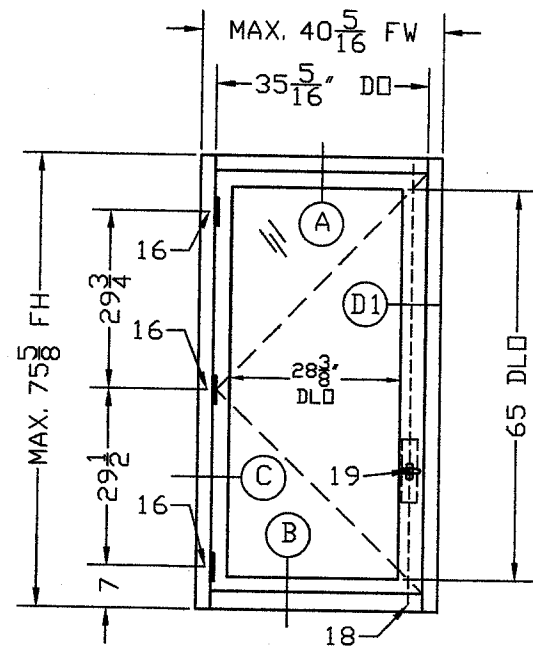
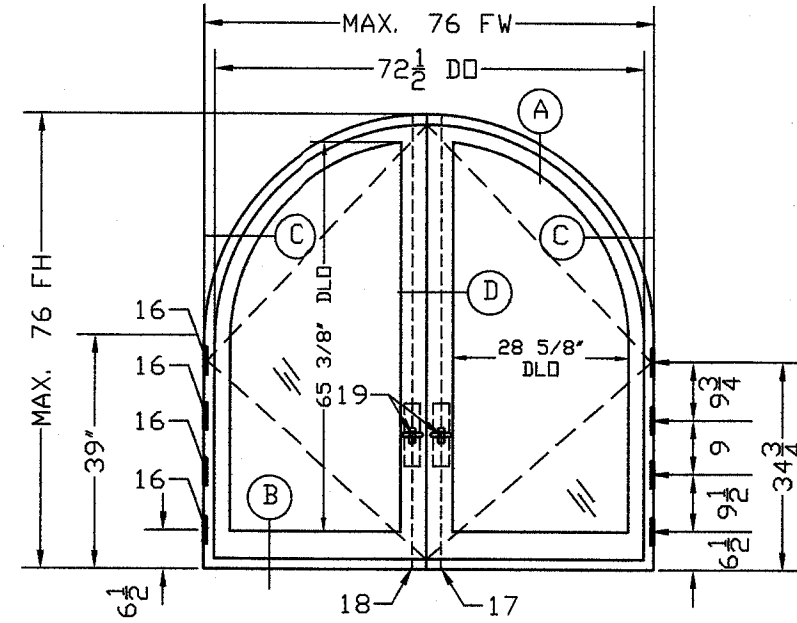
MODEL C4001
SQUARE



MODEL C4002
ELLIPTICAL



MODEL C4003
ARCHED



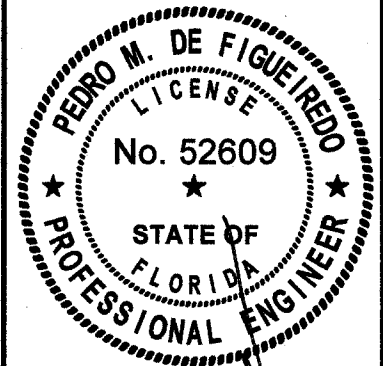
NOTE: THIS OPTION CAN
BE DONE AS ELLIPTICAL

PREMIUM
ESTATES
S.A.C.

AV. RICARDO PALMA #843
LIMA, PERU
TEL: (511) 610-9110

PRODUCT:
SERIES C4000
MAHOGANY CASEMENT
IMPACT WINDOWS
LARGE & SMALL MISSILE

ENGINEERING:
EngCo Inc.
CA 8116
1791 BLOUNT ROAD 907
POMPANO BEACH - FL. 33069
ENGCO@AOL.COM



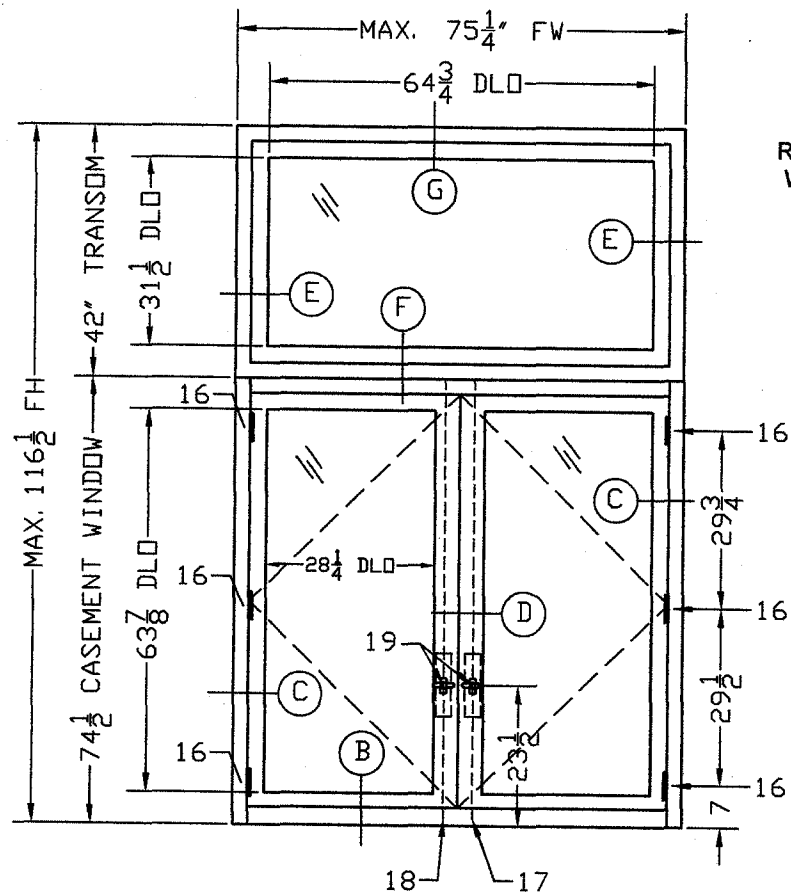
DEC 16 2017

Engineer Seal
Pedro De Figueiredo
PE 52609

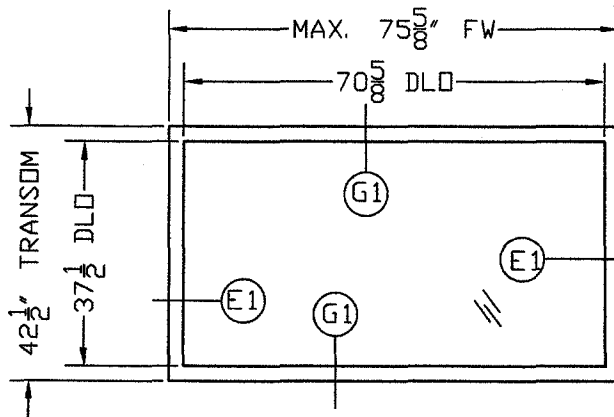
Date: 12/16/17
Scale: NA
Design by: PPMF

Drawing Number
17-884

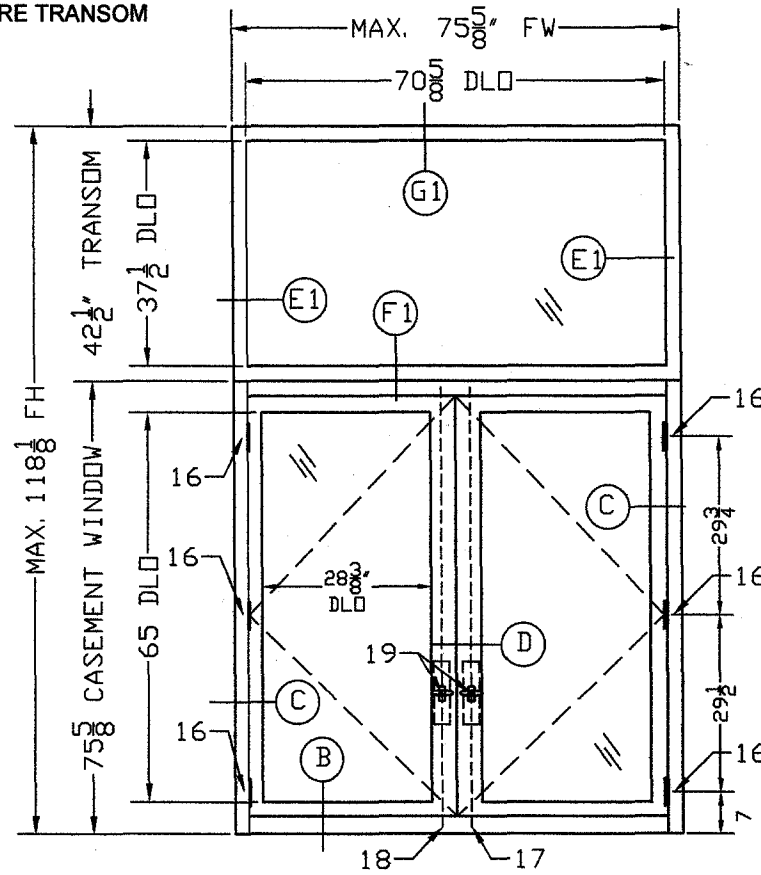
SHEET
2 of 11



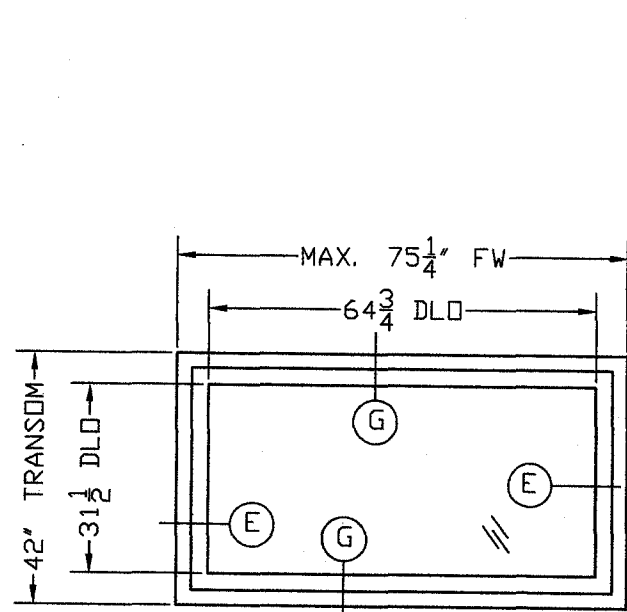
MODEL C4004
RETANGULAR WINDOW
W/ SQUARE TRANSOM



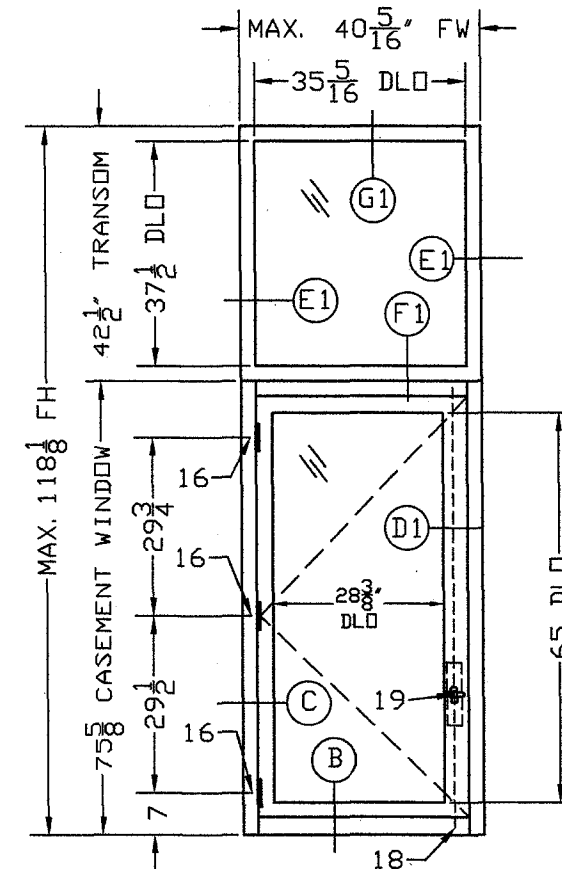
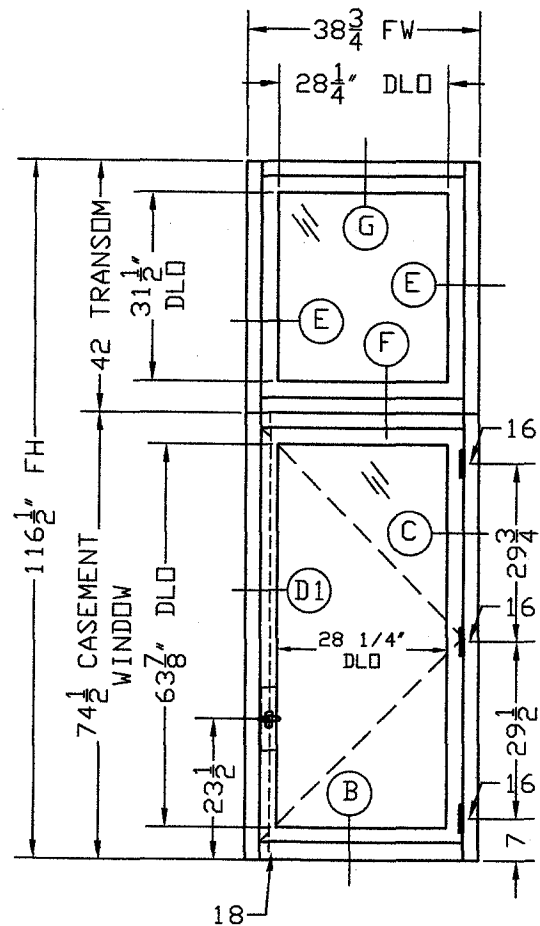
MODEL C4004A
RETANGULAR WINDOW
W/ SQUARE TRANSOM



NOTE:
FIXED WINDOW TRANSOM CAN
BE USED SEPARATELY FROM
THE CASEMENT WINDOW



NOTE:
FIXED WINDOW TRANSOM CAN
BE USED SEPARATELY FROM
THE CASEMENT WINDOW

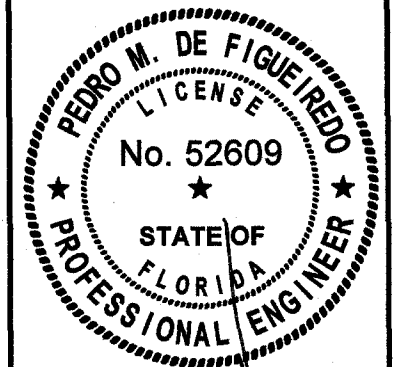


PREMIUM
ESTATES
S.A.C.

AV. RICARDO PALMA #843
LIMA, PERU
TEL: (511) 610-9110

PRODUCT:
SERIES C4000
MAHOGANY CASEMENT
IMPACT WINDOWS
LARGE & SMALL MISSILE

ENGINEERING:
EngCo Inc.
CA 8116
1791 BLOUNT ROAD 907
POMPANO BEACH - FL. 33069
ENGCO@AOL.COM



DEC 16 2017

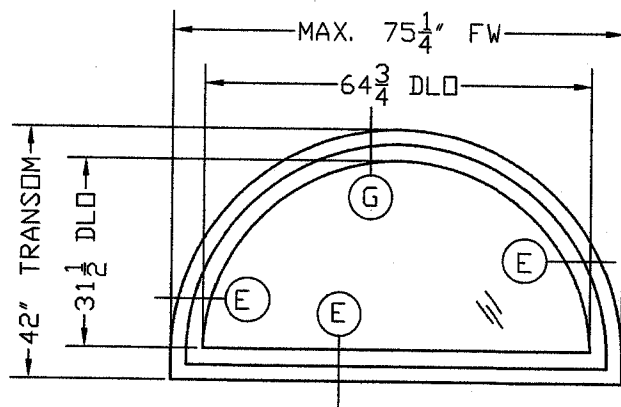
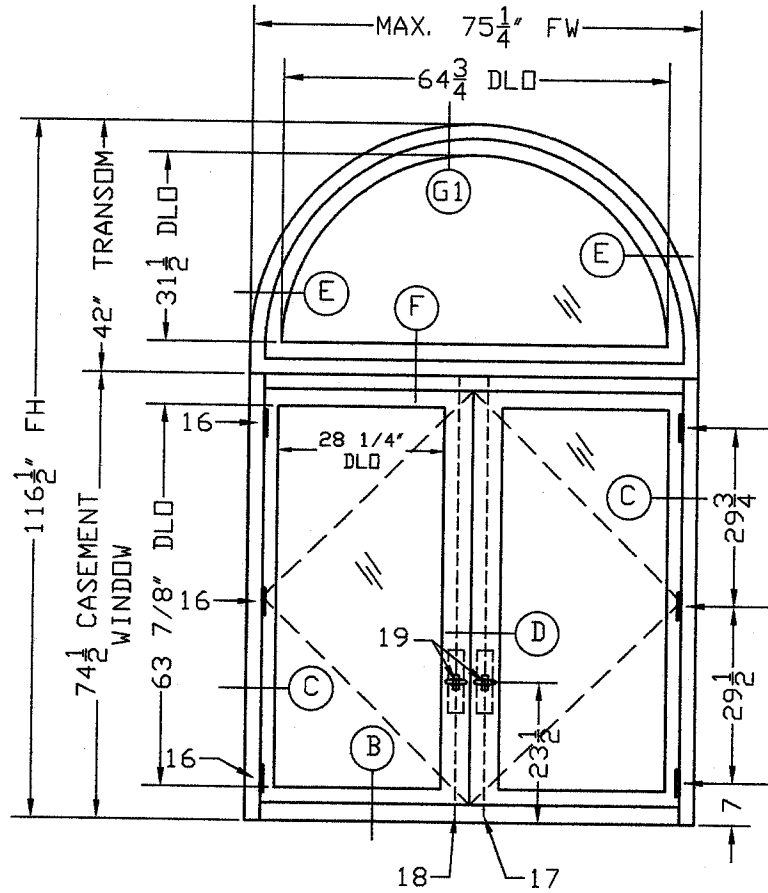
Engineer Seal
Pedro De Figueiredo
PE 52609

Date: 12/16/17
Scale: NA
Design by: PPMF

Drawing Number
17-884

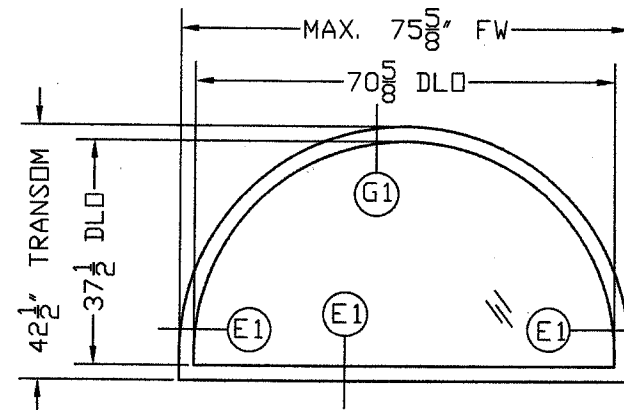
SHEET
3 of 11

MODEL C4005
RETANGULAR WINDOW W/
ARCHED/ELLIPTICAL
TRANSOM

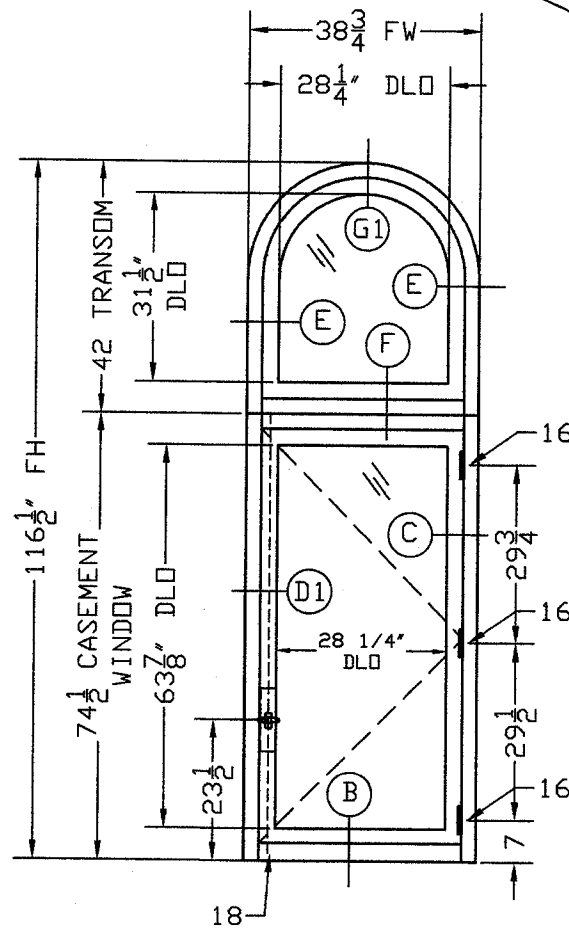


NOTE:
FIXED WINDOW TRANSOM CAN
BE USED SEPARATELY FROM
THE CASEMENT WINDOW

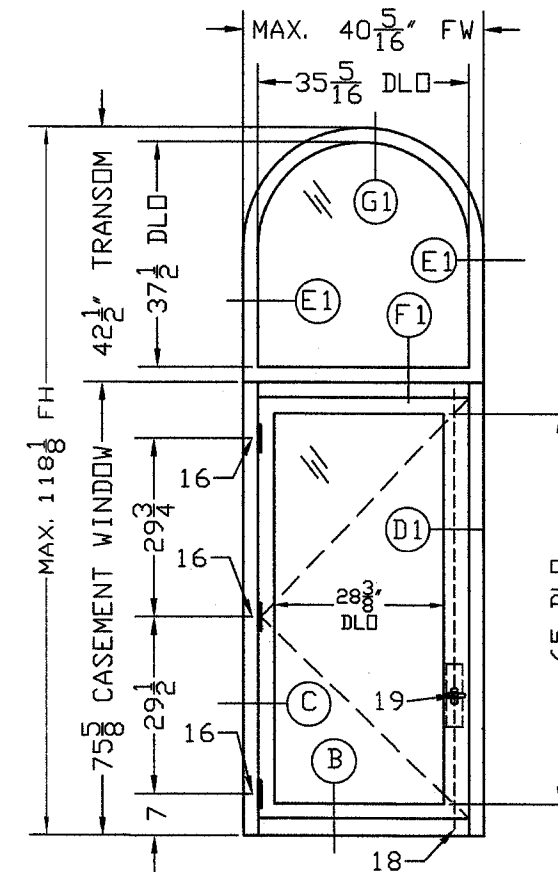
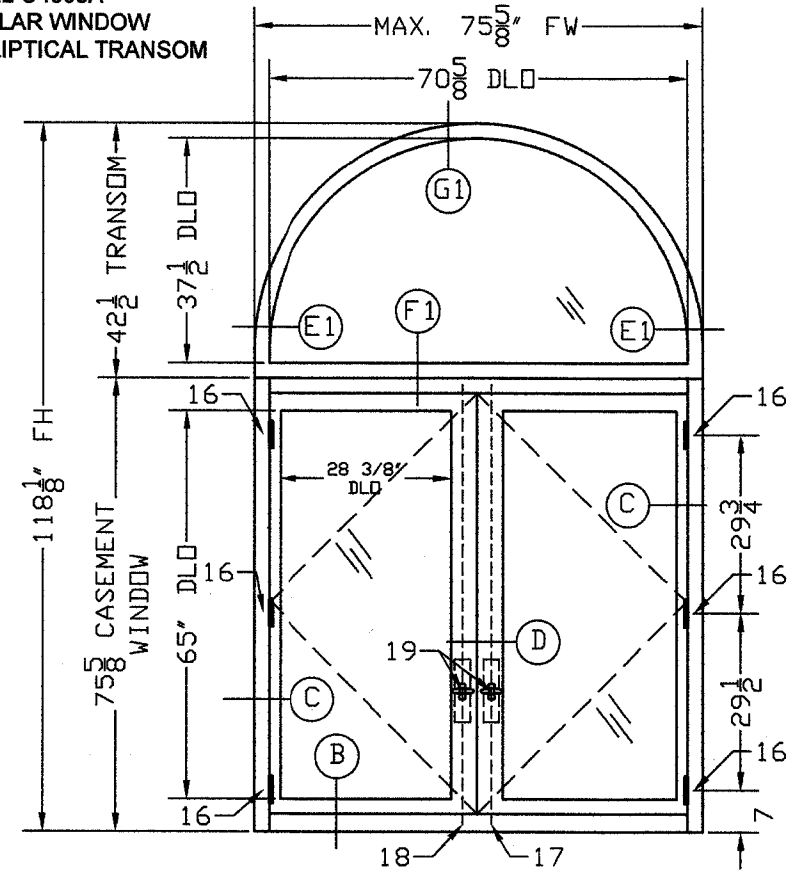
MODEL C4005A
RETANGULAR WINDOW
W/ ARCHED/ ELLIPTICAL
TRANSOM



NOTE:
FIXED WINDOW TRANSOM CAN
BE USED SEPARATELY FROM
THE CASEMENT WINDOW



MODEL C4005A
RETANGULAR WINDOW
W/ ARCHED/ ELLIPTICAL
TRANSOM

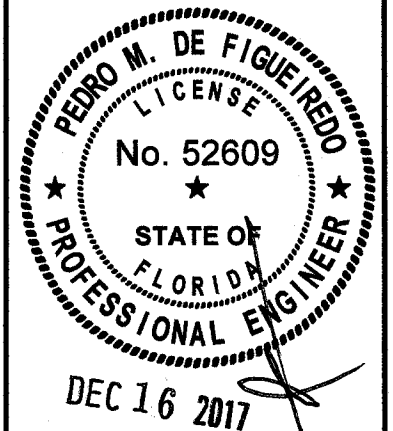


PREMIUM
ESTATES
S.A.C.

AV. RICARDO PALMA #843
LIMA, PERU
TEL: (511) 610-9110

PRODUCT:
SERIES C4000
MAHOGANY CASEMENT
IMPACT WINDOWS
LARGE & SMALL MISSILE

ENGINEERING:
EngCo Inc.
CA 8116
1791 BLOUNT ROAD 907
POMPANO BEACH - FL. 33069
ENGCO@AOL.COM



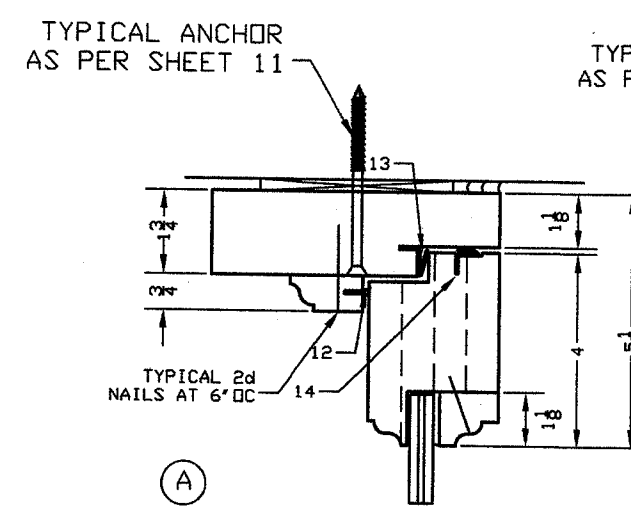
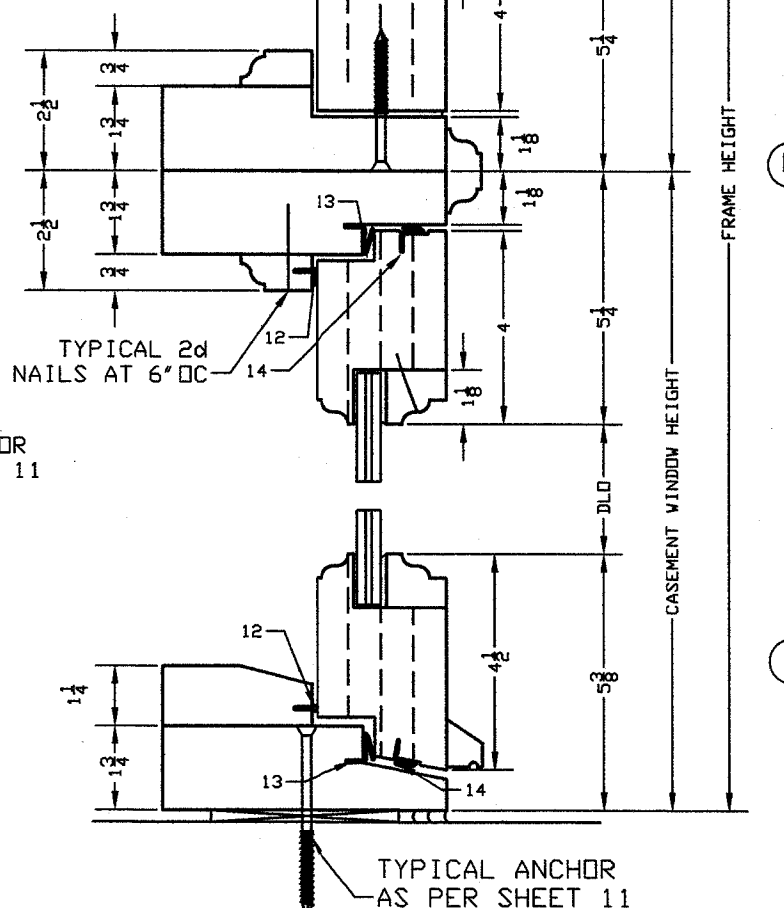
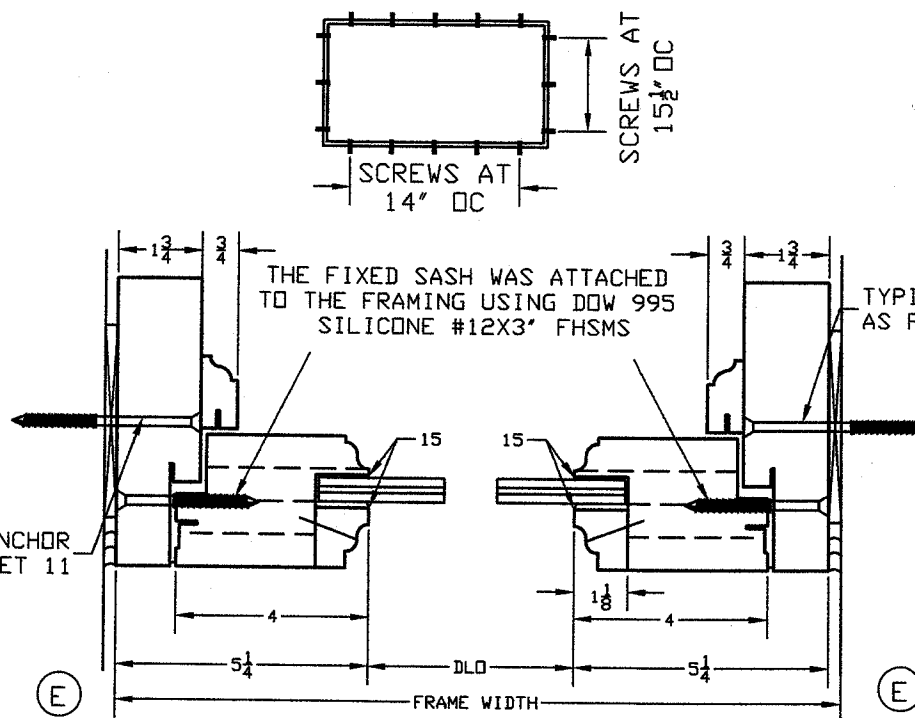
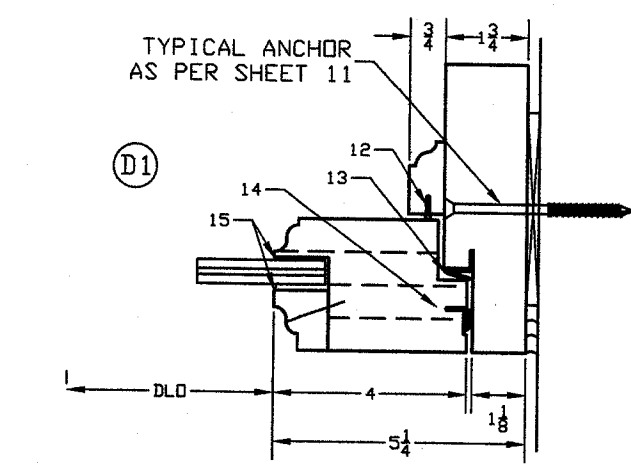
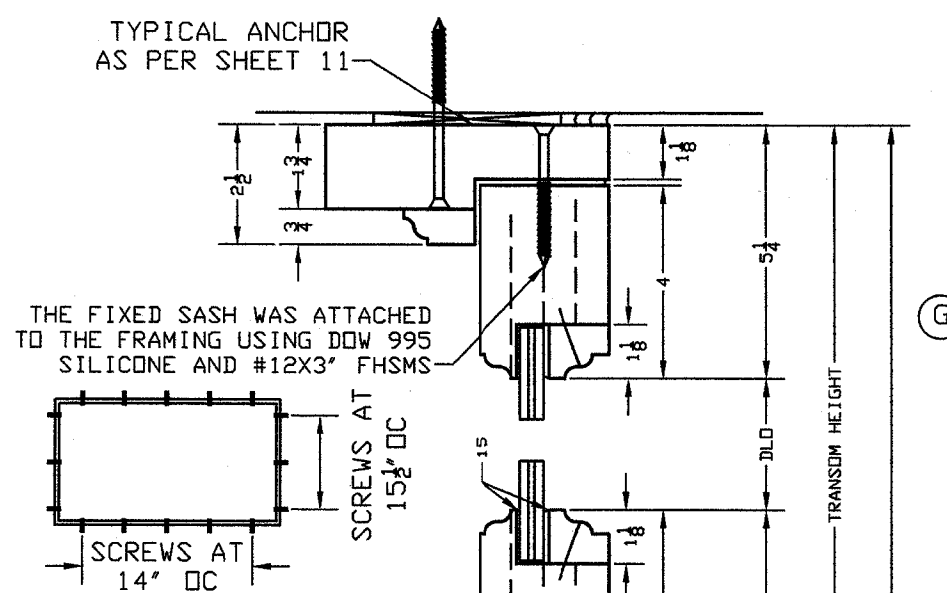
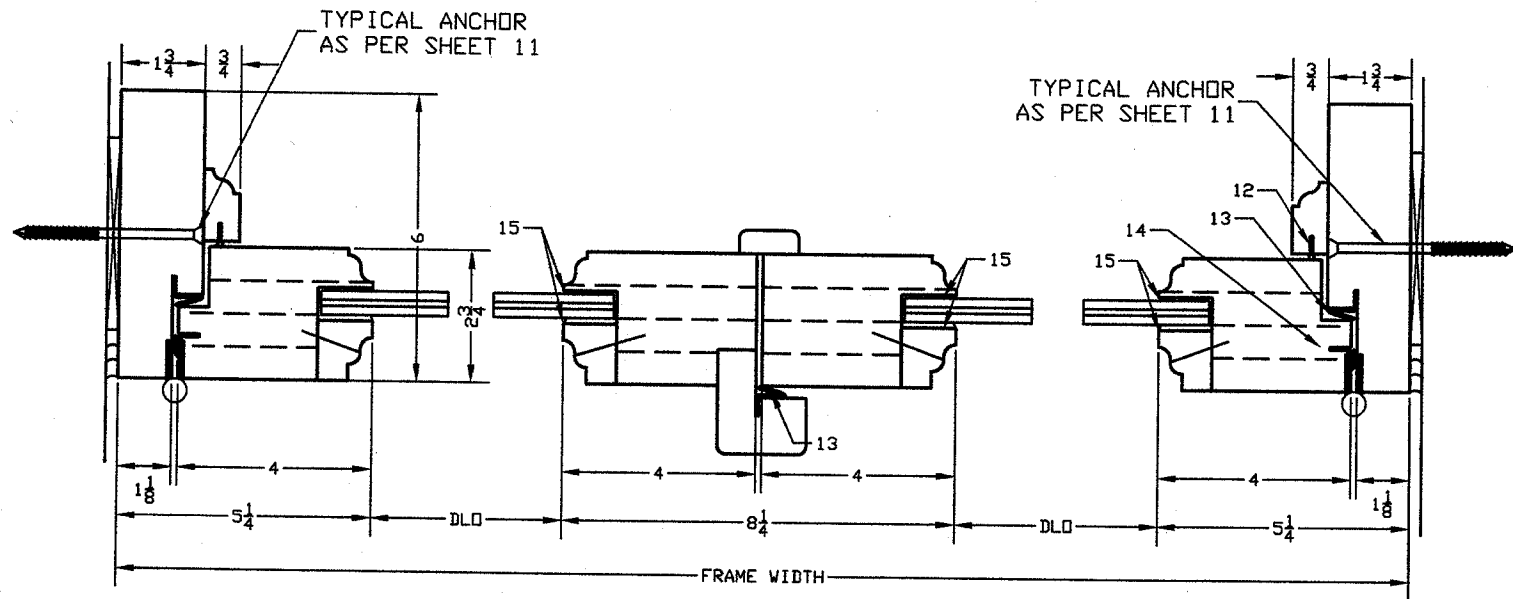
Engineer Seal
Pedro De Figueiredo
PE 52609

Date: 12/16/17
Scale: NA
Design by: PPMF

Drawing Number
17-884

SHEET
4 of 11

SECTION DETAILS
 MODELS C4001, C4002, C4003, C4004 & C4005

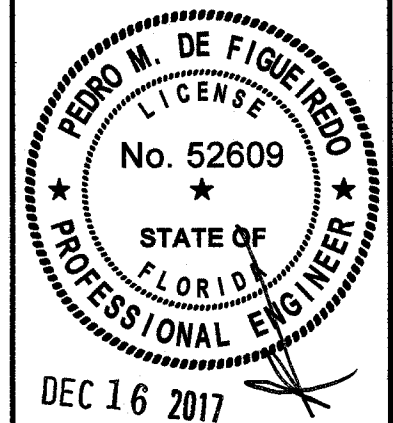


PREMIUM
 ESTATES
 S.A.C.

AV. RICARDO PALMA #843
 LIMA, PERU
 TEL: (511) 610-9110

PRODUCT:
SERIES C4000
 MAHOGANY CASEMENT
 IMPACT WINDOWS
 LARGE & SMALL MISSILE

ENGINEERING:
EngCo Inc.
 CA 8116
 1791 BLOUNT ROAD 907
 POMPANO BEACH - FL 33069
 ENGCO@AOL.COM



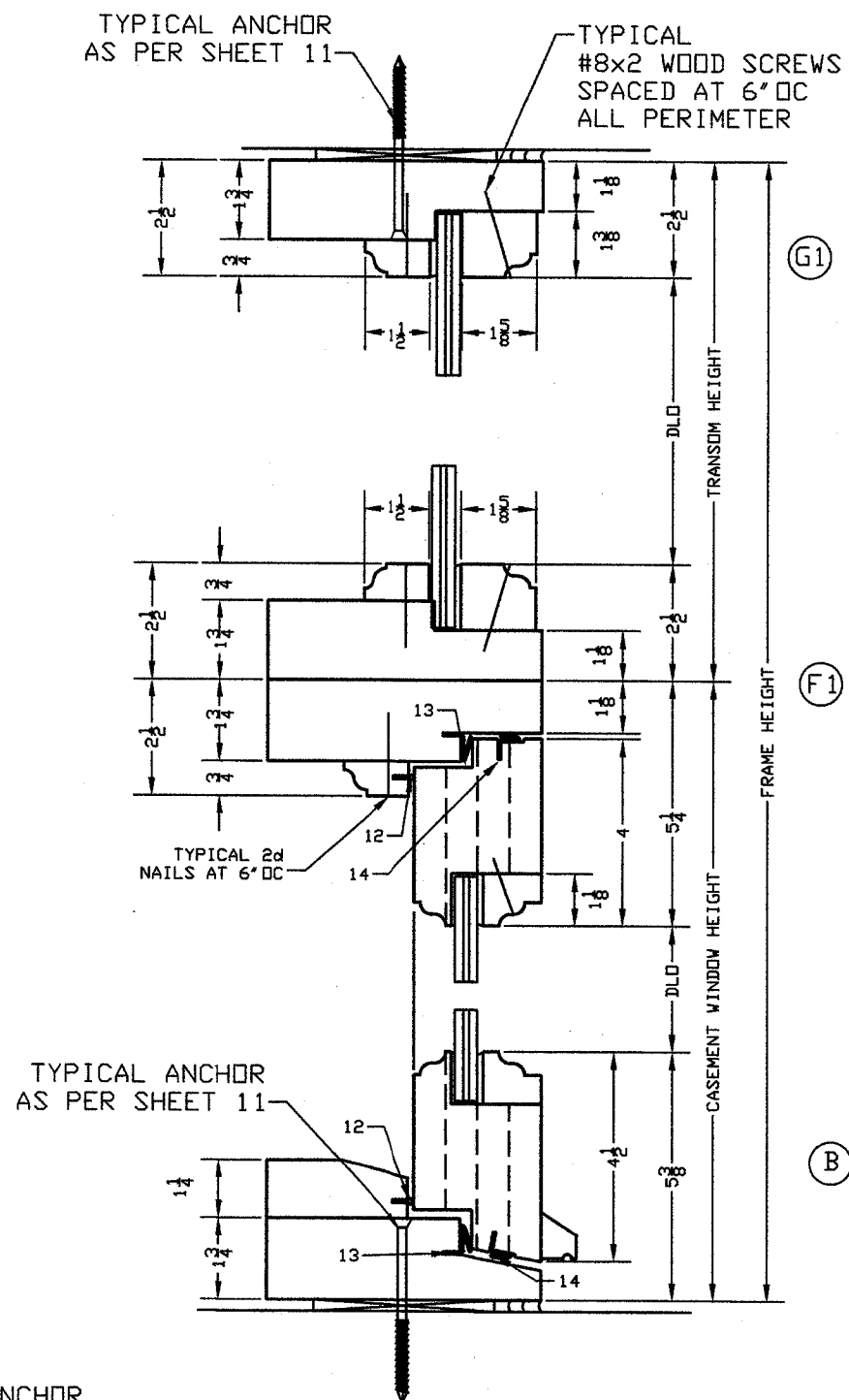
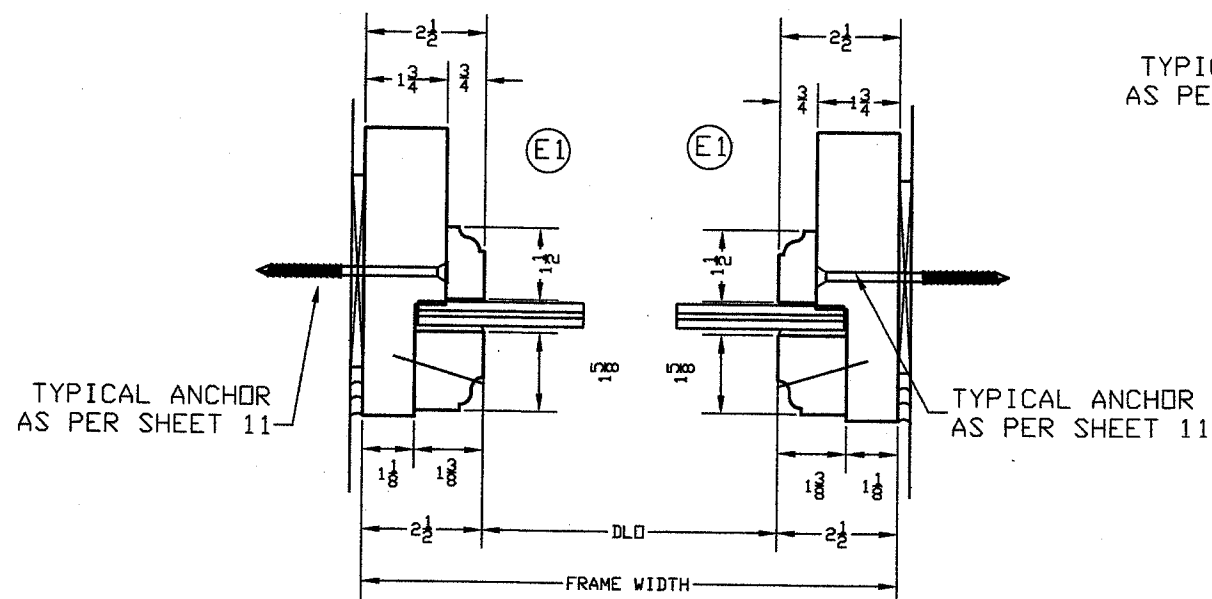
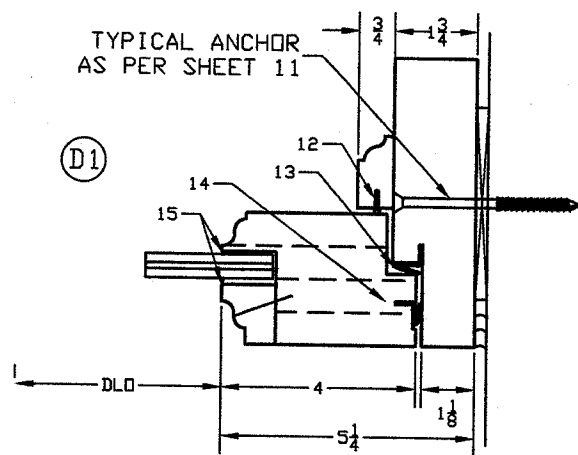
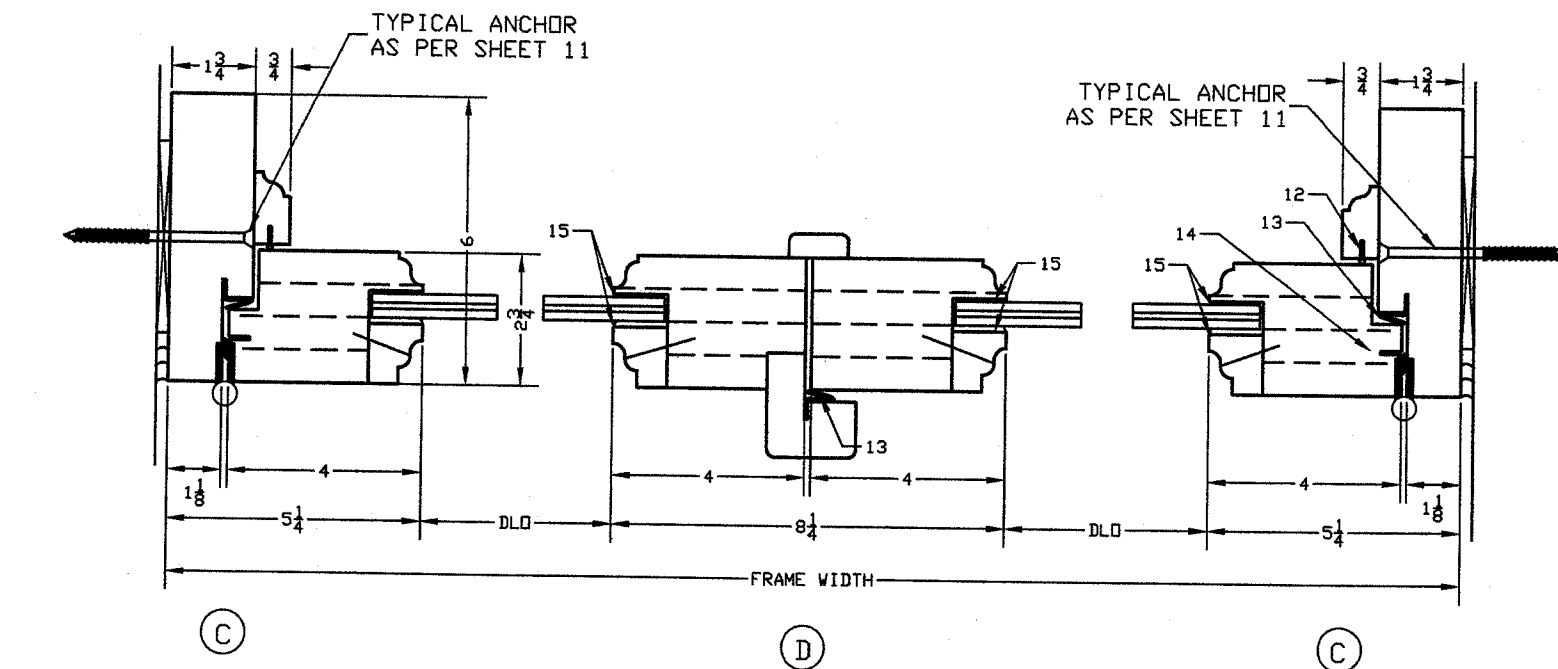
Engineer Seal
 Pedro De Figueiredo
 PE 52609

Date: 12/16/17
 Scale: NA
 Design by: PPMF

Drawing Number
17-884

SHEET
5 of 11

SECTION DETAILS
MODELS C4004A & C4005A

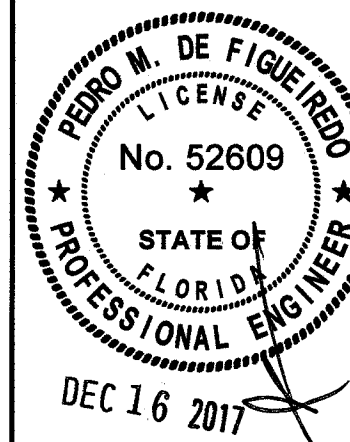


PREMIUM
ESTATES
S.A.C.

AV. RICARDO PALMA #843
LIMA, PERU
TEL: (511) 610-9110

PRODUCT:
SERIES C4000
MAHOGANY CASEMENT
IMPACT WINDOWS
LARGE & SMALL MISSILE

ENGINEERING:
EngCo Inc.
CA 8116
1791 BLOUNT ROAD 907
POMPANO BEACH - FL. 33069
ENGCO@AOL.COM



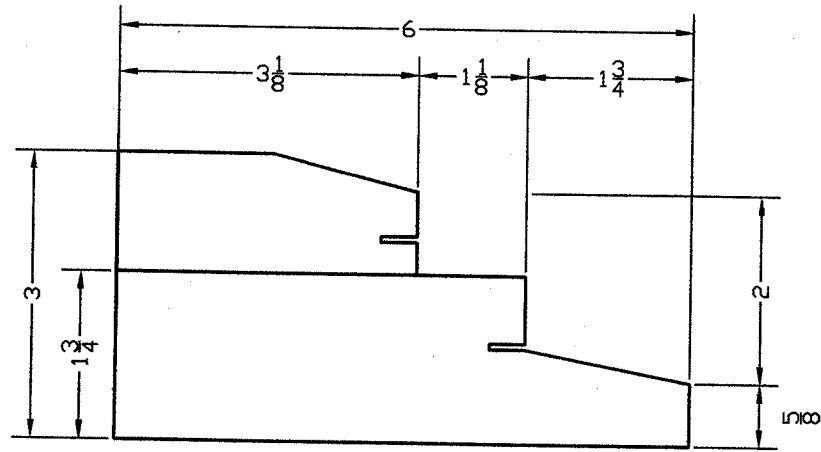
Engineer Seal
Pedro De Figueiredo
PE 52609

Date: 12/16/17
Scale: NA
Design by: PPMF

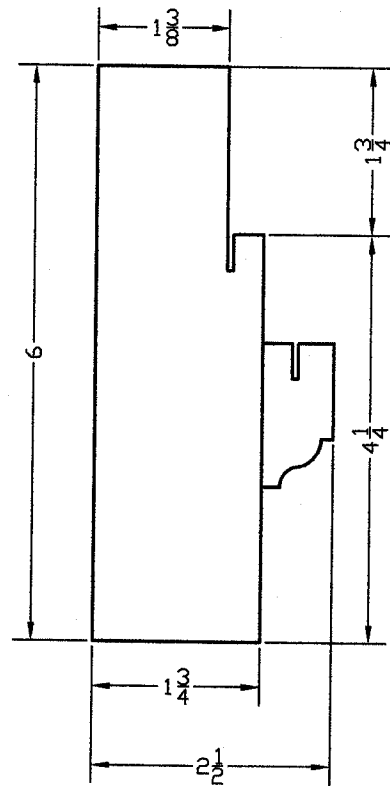
Drawing Number
17-884

SHEET
6 of 11

**WINDOW COMPONENTS
MODELS C4001, C4004 & C4005**

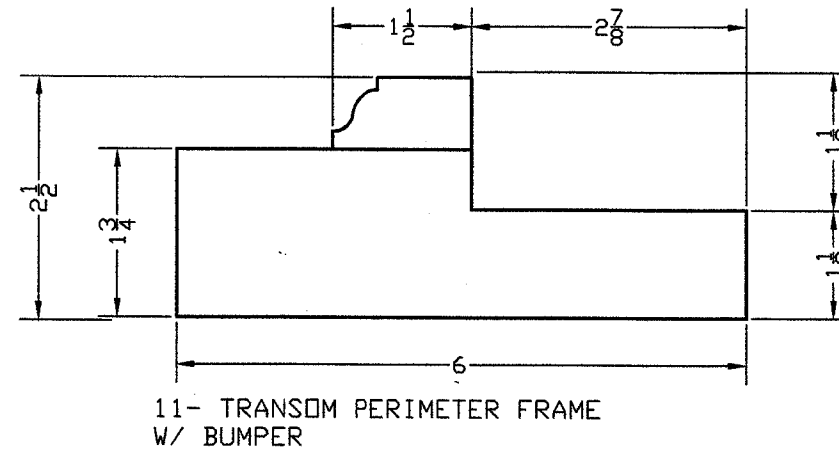
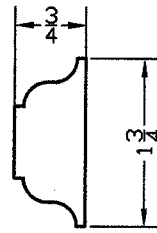


8- SILL FRAME W/ BUMPER

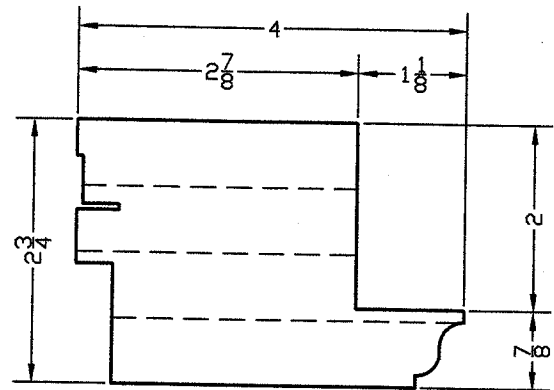


9- JAMB/HEAD FRAME W/ BUMPER

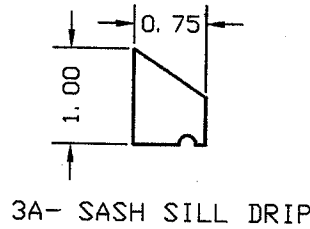
10- FRAME Moulding



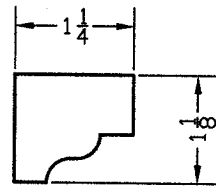
11- TRANSM PERIMETER FRAME W/ BUMPER



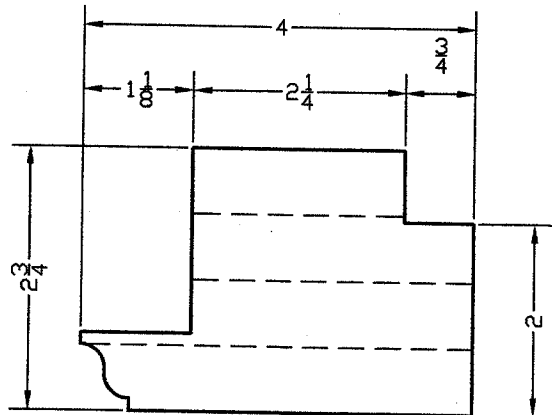
7- HINGE STYLE



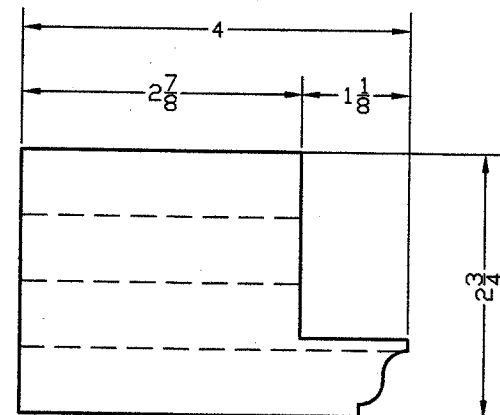
3A- SASH SILL DRIP



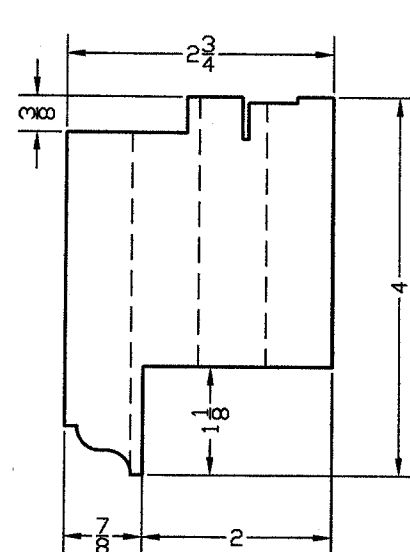
2- SASH GLAZING STOP



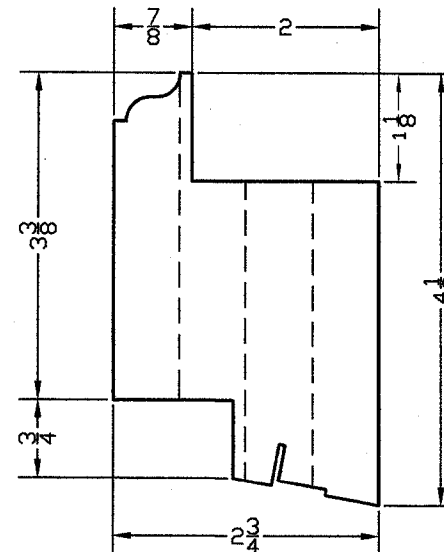
5- ACTIVE STYLE



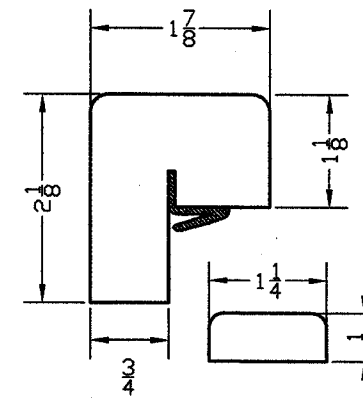
6- INACTIVE STYLE



4- SASH TOP RAIL



3- SASH BOTTOM RAIL



1- ASTRAGAL

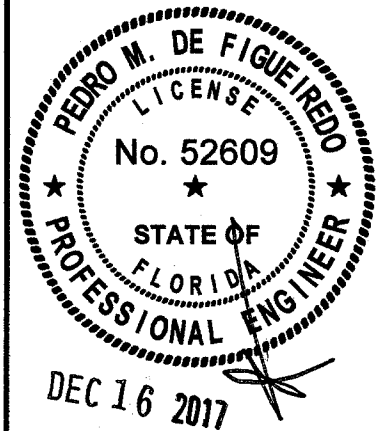
BILL OF MATERIALS	
1	ASTRAGAL - SOLID MAHOGANY
2	SASH GLAZING STOP - SOLID MAHOGANY
3	SASH BOTTOM RAIL - LAMINATED MAHOGANY
4	SASH TOP RAIL - LAMINATED MAHOGANY
5	ACTIVE STILE - LAMINATED MAHOGANY
6	INACTIVE STILE - LAMINATED MAHOGANY
7	HINGE STILE - LAMINATED MAHOGANY
8	SILL FRAME W/ BUMPER - SOLID MAHOGANY
9	JAMB/HEAD FRAME W/ BUMPER - SOLID MAHOGANY
10	FRAME Moulding - SOLID MAHOGANY
11	TRANSM FRAMING W/ BUMPER - SOLID/ LAMINATED MAHOGANY
12	WEATHER-STRIPPING WS1 - TUBULAR SCHLEGEL U3734 QWS400
13	WEATHER-STRIPPING WS2 - KERF TYPE SCHLEGEL U8334
14	WEATHER-STRIPPING WS3 - FLAT TYPE SCHLEGEL U6934
15	SILICONE DDW 995
16	(3 PER LEAF) 4 1/2" X 0.138" SOLID BRASS HINGE BOLTED TO THE FRAME USING (4) 1/4" X 1 7/16" FHMS AND NUTS AND ATTACHED TO HINGE STILE USING (4) #10X2" FHSMS
17	3 POINT HIDDEN CREMONE W/ 5/8X2.5 ROD
18	2 POINT HIDDEN CREMONE W/ 5/8X2.5 ROD
19	LOCK HANDLE TESA BLACK

PREMIUM
ESTATES
S.A.C.

AV. RICARDO PALMA #843
LIMA, PERU
TEL: (511) 610-9110

PRODUCT:
SERIES C4000
MAHOGANY CASEMENT
IMPACT WINDOWS
LARGE & SMALL MISSILE

ENGINEERING:
EngCo Inc.
CA 8116
1791 BLOUNT ROAD 907
POMPANO BEACH - FL 33069
ENGCO@AOL.COM



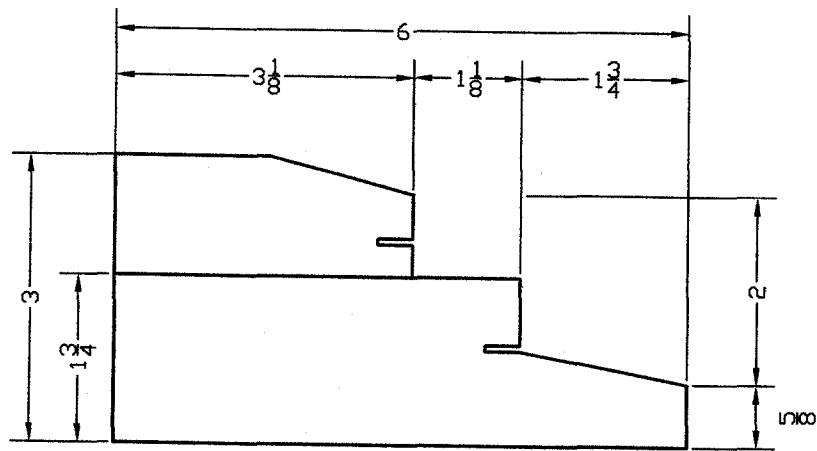
Engineer Seal
Pedro De Figueiredo
PE 52609

Date: 12/16/17
Scale: NA
Design by: PPMF

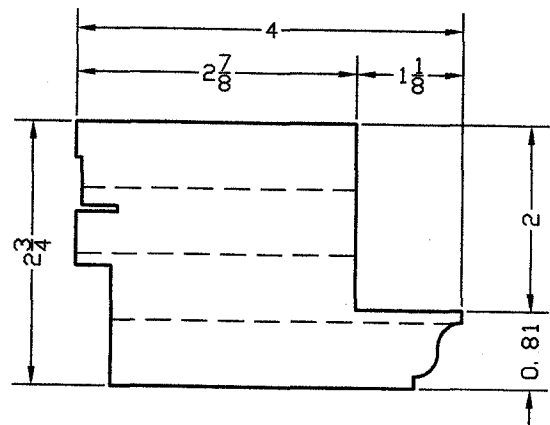
Drawing Number
17-884

SHEET
7 of 11

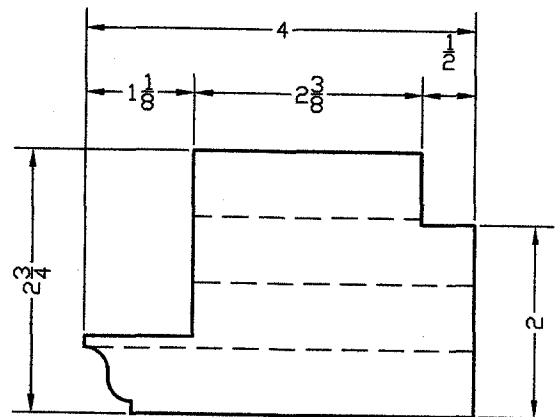
**WINDOW COMPONENTS
MODELS C4004A & C4005A**



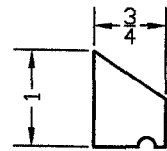
8- SILL FRAME W/ BUMPER



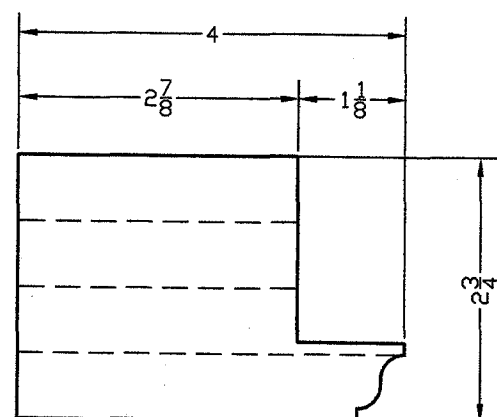
7- HINGE STYLE



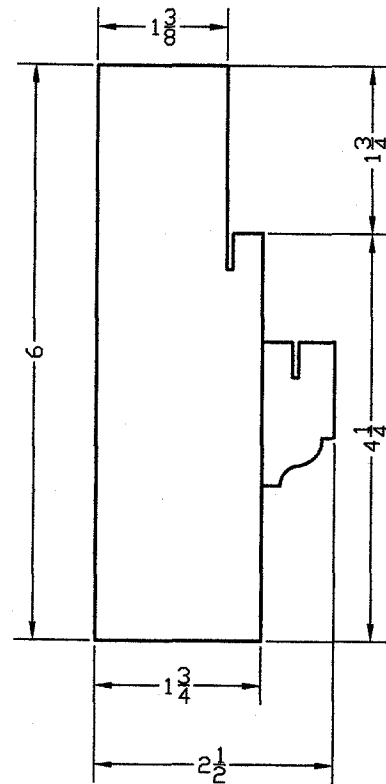
5- ACTIVE STYLE



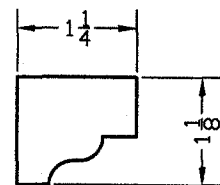
3A- SASH SILL DRIP



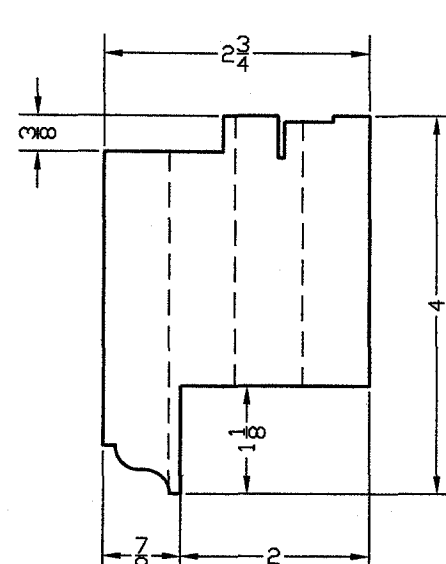
6- INACTIVE STYLE



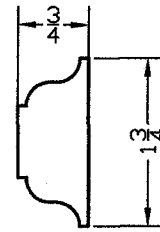
9- JAMB/HEAD FRAME
W/ BUMPER



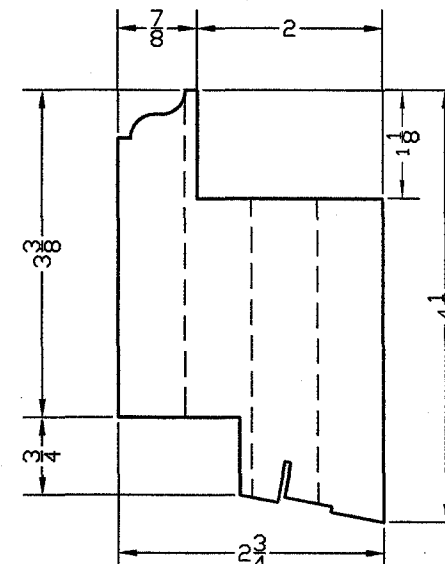
2- SASH GLAZING STOP



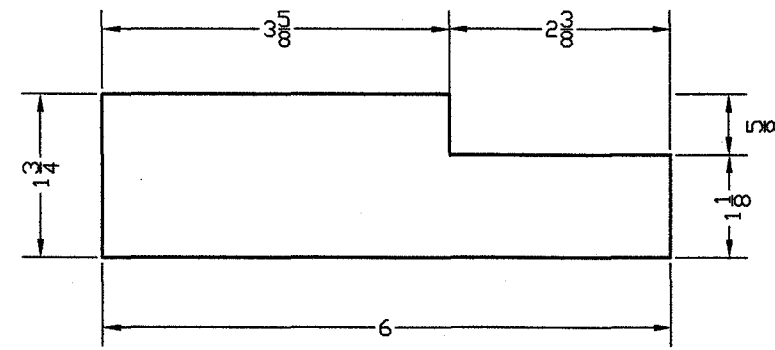
4- SASH TOP RAIL



10- FRAME MOULDING

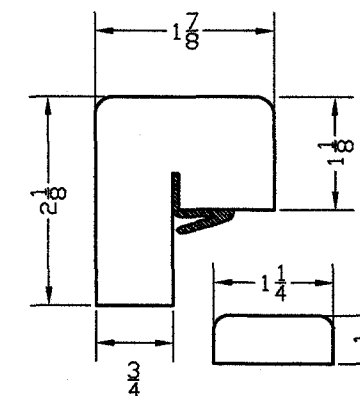


3- SASH BOTTOM RAIL



11- TRANSOM JAMB FRAME
11A- TRANSOM HEAD/SILL FRAME

BILL OF MATERIALS	
1	ASTRAGAL - SOLID MAHOGANY
2	SASH GLAZING STOP - SOLID MAHOGANY
3	SASH BOTTOM RAIL - LAMINATED MAHOGANY
4	SASH TOP RAIL - LAMINATED MAHOGANY
5	ACTIVE STILE - LAMINATED MAHOGANY
6	INACTIVE STILE - LAMINATED MAHOGANY
7	HINGE STILE - LAMINATED MAHOGANY
8	SILL FRAME W/ BUMPER - SOLID MAHOGANY
9	JAMB/HEAD FRAME W/ BUMPER - SOLID MAHOGANY
10	FRAME MOULDING - SOLID MAHOGANY
11	TRANSOM JAMB - SOLID MAHOGANY
11A	TRANSOM HEADER/SILL - SOLID/LAMINATED MAHOGANY
11B	TRANSOM GLAZING STOP - SOLID MAHOGANY
12	WEATHER-STRIPPING WS1 - TUBULAR SCHLEGEL U3734 QWS400
13	WEATHER-STRIPPING WS2 - KERF TYPE SCHLEGEL U8334
14	WEATHER-STRIPPING WS3 - FLAT TYPE SCHLEGEL U6934
15	SILICONE DOW 995
16	(3 PER LEAF) 4 1/2" X 0.138" SOLID BRASS HINGE BOLTED TO THE FRAME USING (4) 1/4" X 1 7/16" FHMS AND NUTS AND ATTACHED TO HINGE STILE USING (4) #10X2" FHMS
17	3 POINT HIDDEN CREMONE W/ 5/8X2.5 ROD
18	2 POINT HIDDEN CREMONE W/ 5/8X2.5 ROD
19	LOCK HANDLE TESA BLACK



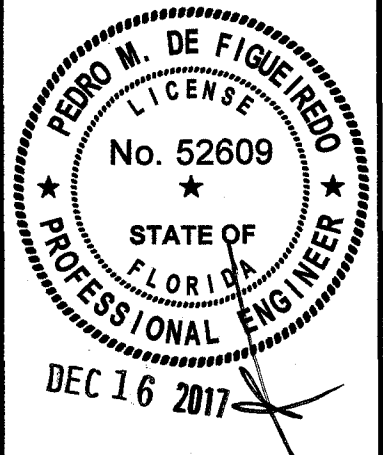
1- ASTRAGAL

PREMIUM
ESTATES
S.A.C.

AV. RICARDO PALMA #843
LIMA, PERU
TEL: (511) 610-9110

PRODUCT:
SERIES C4000
MAHOGANY CASEMENT
IMPACT WINDOWS
LARGE & SMALL MISSILE

ENGINEERING:
EngCo Inc.
CA 8116
1791 BLOUNT ROAD 907
POMPANO BEACH - FL 33069
ENGCO@AOL.COM



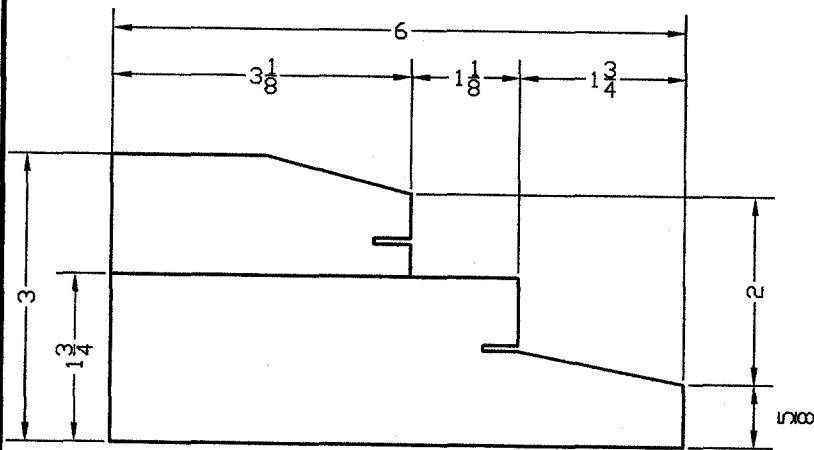
Engineer Seal
Pedro De Figueiredo
PE 52609

Date: 12/16/17
Scale: NA
Design by: PPMF

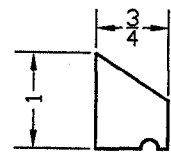
Drawing Number
17-884

SHEET
8 of 11

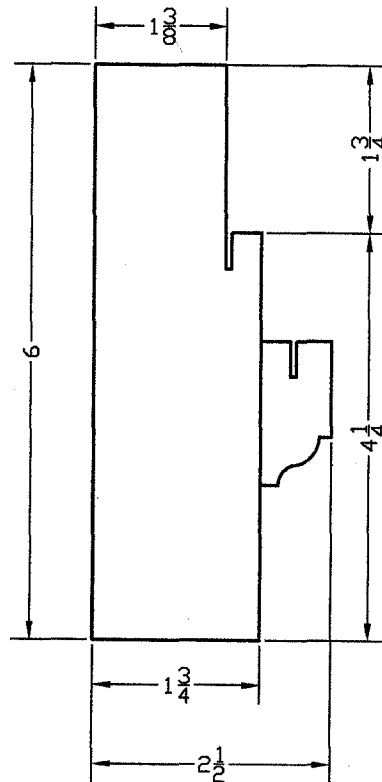
**WINDOW COMPONENTS
MODELS C4002 & C4003**



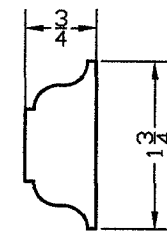
8- SILL FRAME W/ BUMPER



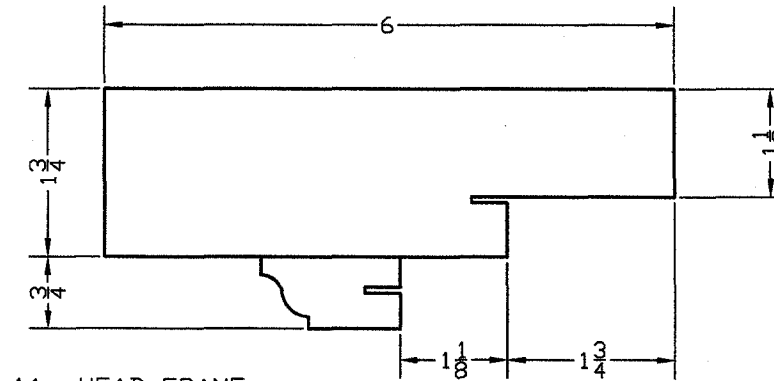
3A- SASH SILL DRIP



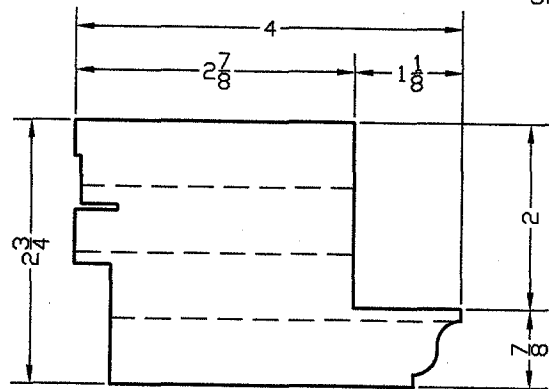
9- JAMB/HEAD FRAME W/ BUMPER



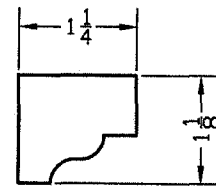
10- FRAME MOULDING



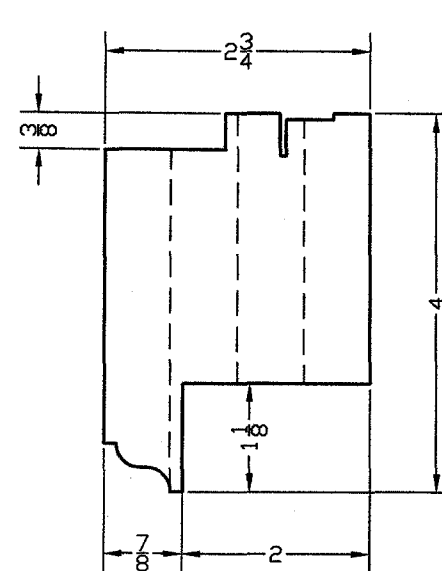
11- HEAD FRAME W/ BUMPER



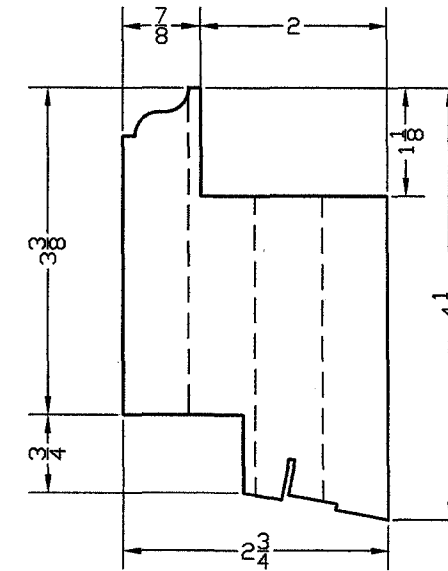
7- HINGE STYLE



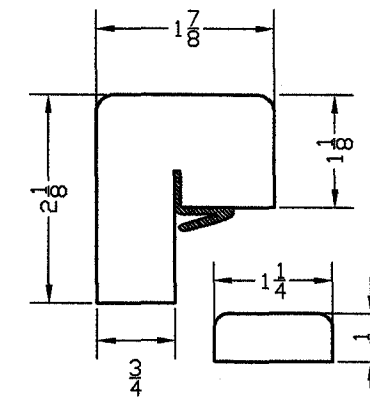
2- SASH GLAZING STOP



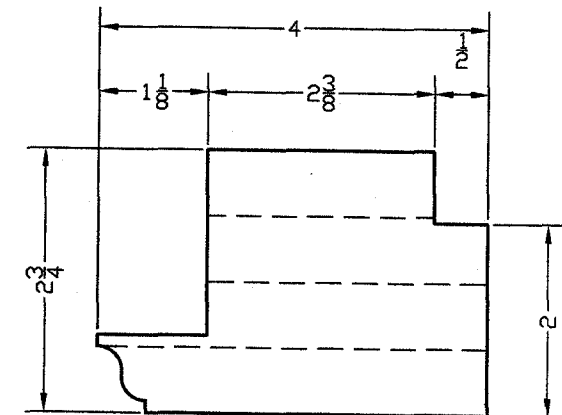
4- SASH TOP RAIL



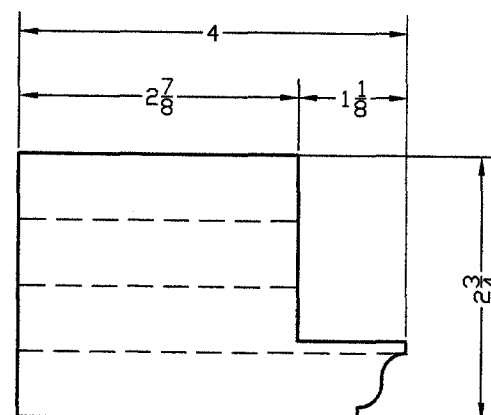
3- SASH BOTTOM RAIL



1- ASTRAGAL



5- ACTIVE STYLE



6- INACTIVE STYLE

BILL OF MATERIALS	
1	ASTRAGAL - SOLID MAHOGANY
2	SASH GLAZING STOP - SOLID MAHOGANY
3	SASH BOTTOM RAIL - LAMINATED MAHOGANY
4	SASH TOP RAIL - LAMINATED MAHOGANY
5	ACTIVE STILE - LAMINATED MAHOGANY
6	INACTIVE STILE - LAMINATED MAHOGANY
7	HINGE STILE - SOLID MAHOGANY
8	SILL FRAME W/ BUMPER - SOLID MAHOGANY
9	JAMB FRAME W/ BUMPER - SOLID MAHOGANY
10	FRAME MOULDING - SOLID MAHOGANY
11	HEAD FRAME W/ BUMPER - LAMINATED MAHOGANY
12	WEATHER-STRIPPING WS1 - TUBULAR SCHLEGEL U3734 QWS400
13	WEATHER-STRIPPING WS2 - KERF TYPE SCHLEGEL U8334
14	WEATHER-STRIPPING WS3 - FLAT TYPE SCHLEGEL U6934
15	SILICONE DOW 995
16	C4003 MODEL (4 PER LEAF) 4 1/2" X 0.138" SOLID BRASS HINGE BOLTED TO THE FRAME USING (4) 1/4" X 1 7/16" FHMS AND NUTS AND ATTACHED TO HINGE STILE USING (4) #10X2" FHMS
16	C4002 MODEL (4 PER LEAF) 0.7" X 6 3/8" SIDANEZ SOLID BRASS HINGE WITH 0.43" PIVOT BOLTED TO THE FRAME USING (4) 1/4" X 1 7/16" FHMS AND NUTS AND ATTACHED TO HINGE STILE USING (4) #8X2 FHMS
17	3 POINT HIDDEN CREMONE W/ 5/8X2.5 ROD
18	2 POINT HIDDEN CREMONE W/ 5/8X2.5 ROD
19	LOCK HANDLE TESA BLACK

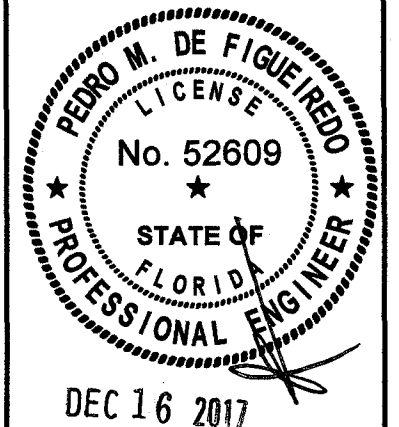
PREMIUM
ESTATES
S.A.C.

AV. RICARDO PALMA #843
LIMA, PERU
TEL: (511) 610-9110

PRODUCT:
SERIES C4000
MAHOGANY CASEMENT
IMPACT WINDOWS
LARGE & SMALL MISSILE

ENGINEERING:

EngCo Inc.
CA 8116
1791 BLOUNT ROAD 907
POMPANO BEACH - FL. 33069
ENGCO@AOL.COM



Engineer Seal
Pedro De Figueiredo
PE 52609

Date: 12/16/17
Scale: NA
Design by: PPMF

Drawing Number
17-884

SHEET
9 of 11

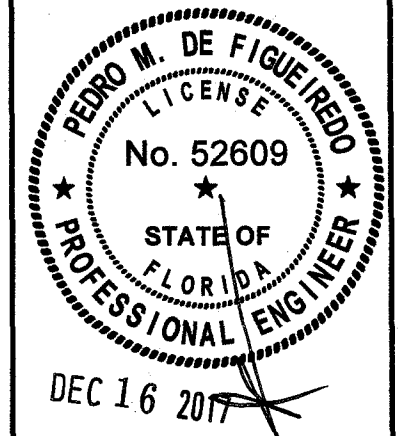
GENERAL CONDITIONS

PREMIUM
ESTATES
S.A.C.

AV. RICARDO PALMA #843
LIMA, PERU
TEL: (511) 610-9110

PRODUCT:
SERIES C4000
MAHOGANY CASEMENT
IMPACT WINDOWS
LARGE & SMALL MISSILE

ENGINEERING:
EngCo Inc.
CA 8116
1791 BLOUNT ROAD 907
POMPANO BEACH - FL 33069
ENGCO@AOL.COM



Engineer Seal
Pedro De Figueiredo
PE 52609

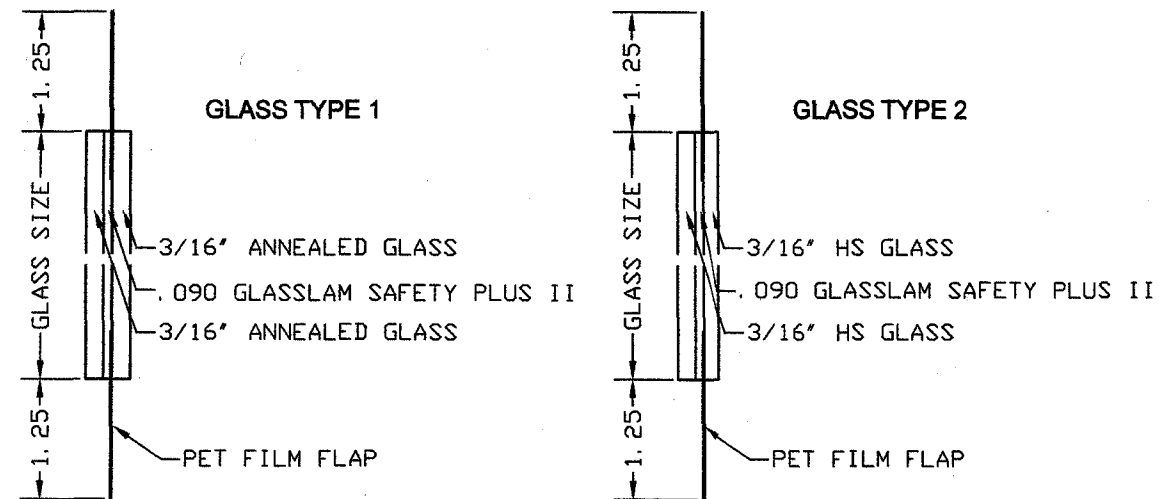
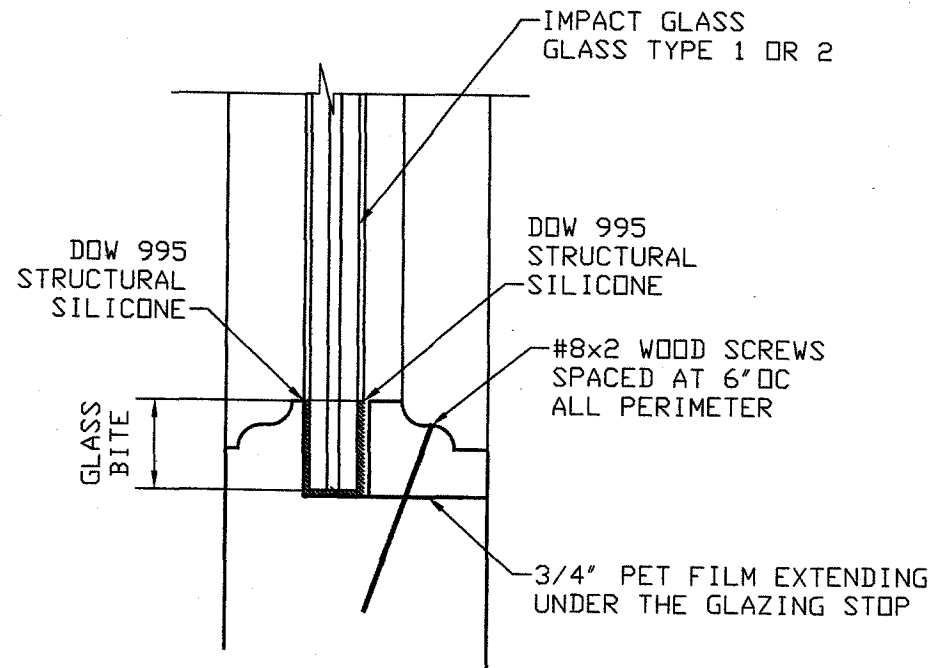
Date: 12/16/17
Scale: NA
Design by: PPMF

Drawing Number
17-884

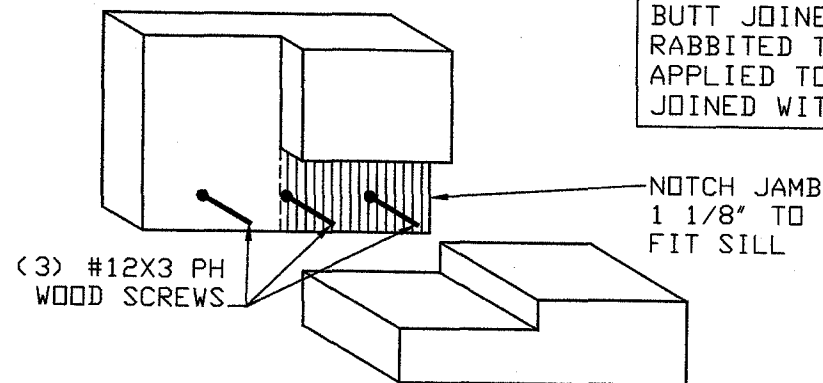
SHEET
10 of 11

GLAZING SCHEDULE:

MODEL	MAX. DLO	LOCATION	GLASS		GLASS BITE		
			TYPE	AREA	TOP	BOT	SIDES
C4001	28.250 x 63.875	SASH	1	12.5	1.00	1.00	0.81
C4002	28.375 x 65.875	SASH	1	12.9	1.00	0.75	1.15
C4003	28.625 x 65.375	SASH	1	12.9	0.75	0.82	0.75
C4004	64.750 x 31.500	TRANSOM	1	14.1	1.00	1.00	1.00
C4004	28.250 x 63.875	SASH	1	12.5	1.00	1.00	0.81
C4005	64.750 x 31.500	TRANSOM	1	14.1	1.00	1.00	1.00
C4005	28.250 x 63.875	SASH	1	12.5	1.00	1.00	0.81
C4004A	70.625 x 37.500	TRANSOM	2	18.3	1.00	1.00	1.00
C4004A	28.375 x 65.000	SASH	2	12.8	0.69	0.69	0.88
C4005A	70.625 x 37.500	TRANSOM	2	18.3	1.00	1.00	1.00
C4005A	28.375 x 65.000	SASH	2	12.8	0.69	0.69	0.88



FRAME CORNER ASSEMBLY

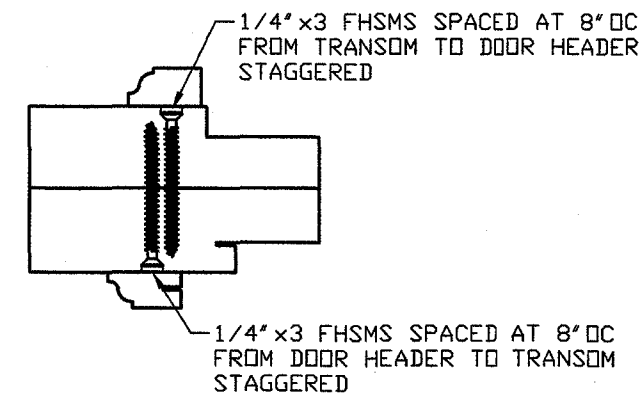


CORNER CONSTRUCTION:
BUTT JOINED WITH JAMB MEMBER
RABBITED TO 1 1/8". GLUE WAS
APPLIED TO EACH CORNER AND
JOINED WITH (3) #12X3 PHWS

NOTCH JAMB
1 1/8" TO
FIT SILL

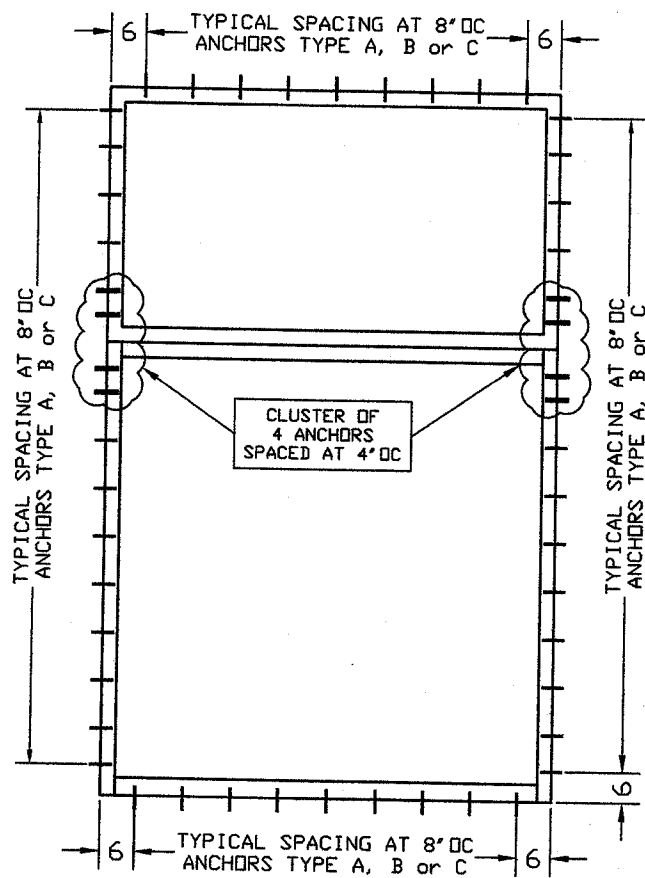
(3) #12X3 PH
WOOD SCREWS

HEADER / TRANSOM ASSEMBLY

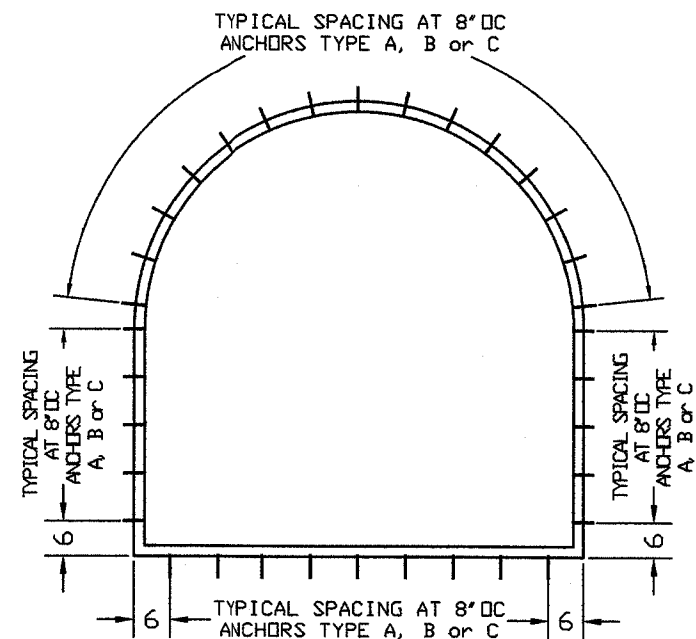
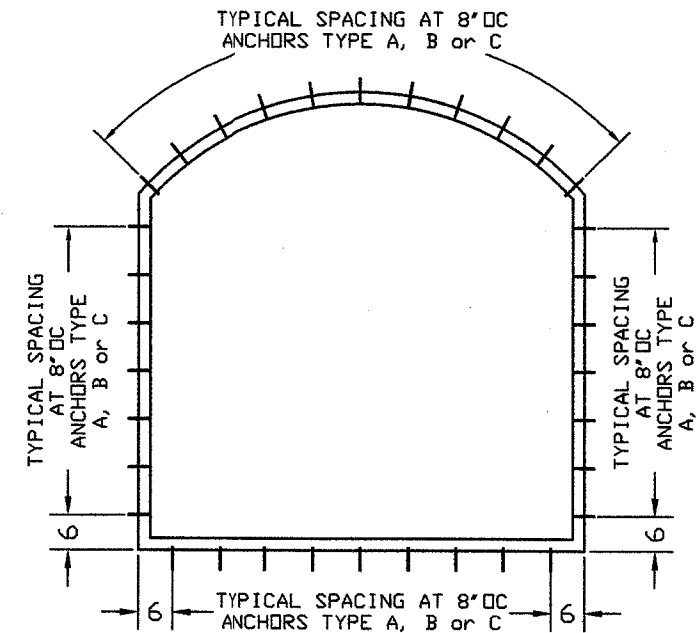
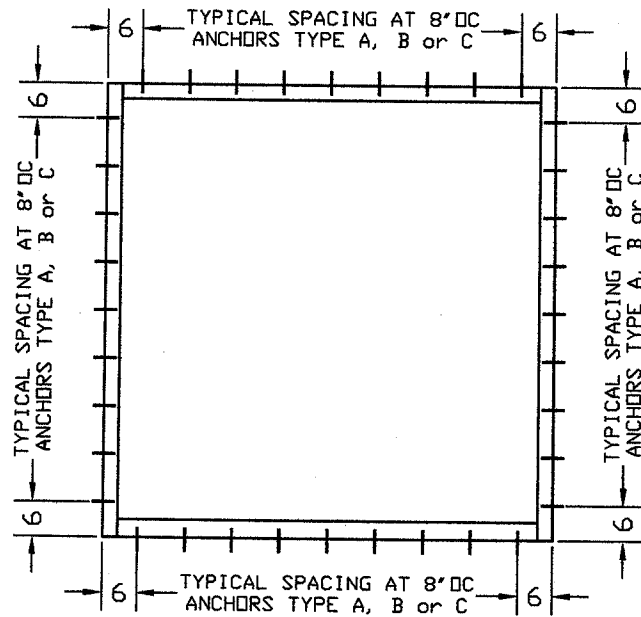


1/4" x 3 FHSMS SPACED AT 8" OC
FROM TRANSOM TO DOOR HEADER
STAGGERED

1/4" x 3 FHSMS SPACED AT 8" OC
FROM DOOR HEADER TO TRANSOM
STAGGERED



FRAMING ANCHORAGE LAY-OUT

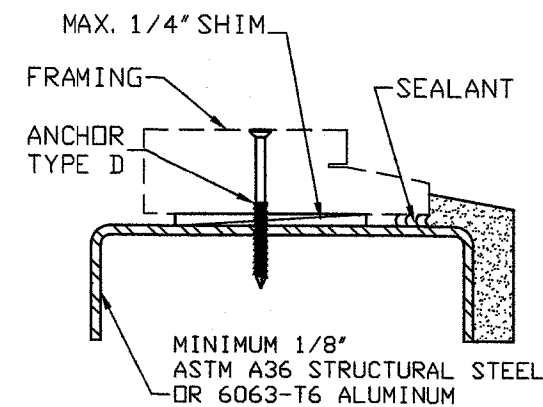
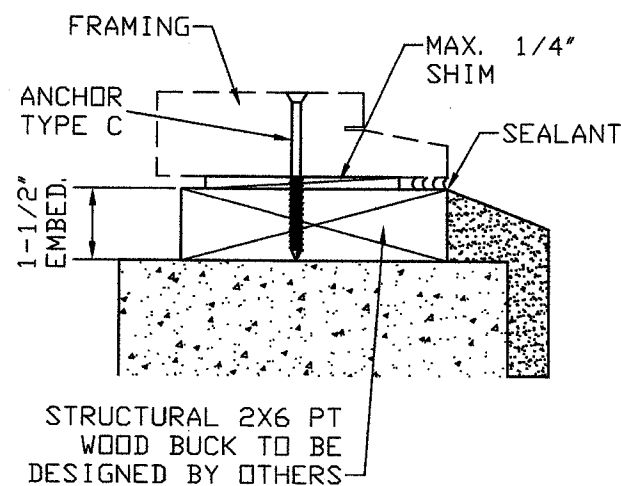
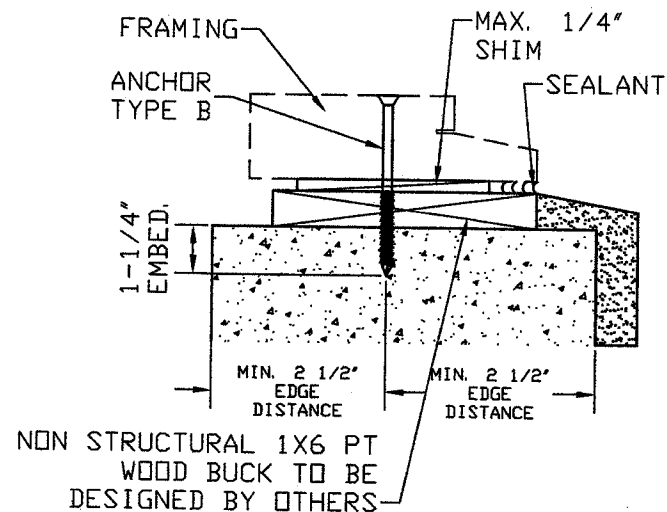
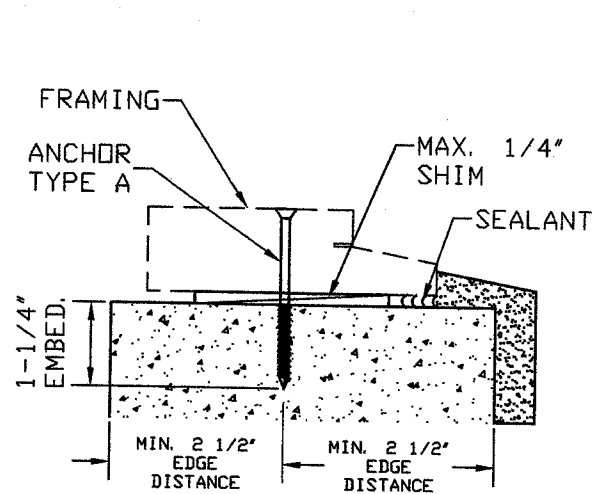


ANCHORAGE NOTES:

- 1- SILL, JAMB AND HEADER WITH TYPE A, B OR C ANCHOR OPTIONS.
- 2- SEE ELEVATIONS FOR WINDOW ANCHORAGE SPACING AND LAY-OUT.
- 3- LAY-OUT APPLICABLE FOR SINGLE WINDOWS FRAMING UNITS

ANCHOR OPTIONS:

- A- 1/4" ITW TAPCON W/ MIN. 1-1/4" EMBEDMENT INTO 3000 PSI CONCRETE OR MASONRY
- B- 1/4" ITW TAPCON THROUGH 1X6 PT WOOD BUCK AND WITH 1-1/4" EMBEDMENT INTO 3000 PSI CONCRETE
- C- 1/4" ITW TAPCON WITH 1 1/2" EMBEDMENT INTO 2X6 PT WOOD BUCK
- D- 1/4"-14 GRADE 5 SELF DRILLING SCREW INTO MIN. 1/8" METAL STRUCTURES (6063-T6 ALUMINUM OR A36 STEEL)

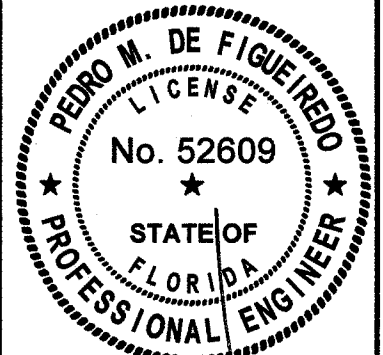


PREMIUM
ESTATES
S.A.C.

AV. RICARDO PALMA #843
LIMA, PERU
TEL: (511) 610-9110

PRODUCT:
SERIES C4000
MAHOGANY CASEMENT
IMPACT WINDOWS
LARGE & SMALL MISSILE

ENGINEERING:
EngCo Inc.
CA 8116
1791 BLOUNT ROAD 907
POMPANO BEACH - FL. 33069
ENGCO@AOL.COM



DEC 16 2017

Engineer Seal
Pedro De Figueiredo
PE 52609

Date: 12/16/17
Scale: NA
Design by: PPMF

Drawing Number
17-884

SHEET
11 of 11